



MODEL 350SS - 3.5 TON DOUBLE-PUMPER FLOOR JACK

UPDATED 10-05

PART ORDER NUMBER	KIT DESCRIPTION	KIT INCLUDES	
		REF. #	DESCRIPTION
350SSK24	HANDLE	23	HANDLE BUMPER
		24	HANDLE
350SSK20	HANDLE RETAINER	20	BOLT
350SSK40	SADDLE COMPLETE	40	SADDLE
		41	RUBBER COVER
350SSK22	HANDLE SPRING	22	HANDLE SPRING
350SSKHU	HYDDRAULIC UNIT COMPLETE	28	POWER UNIT COMPLETE
350SSK27	RELEASE VALVE	27	RELEASE ASSEMBLY
350SSK3	FRONT WHEEL	1	RETAINING RING
		2	WASHER
		3	WHEEL
350SSK12	CASTER	10	NUT M18
		11	SPRING WASHER
		12	CASTER ASSEMBLY
350SSK21	HANDLE SOCKET COMPLETE	16	BOLT X 2
		17	SPRING WASHER
		20	BOLT
		21	HANDLE SOCKET WITH ROLLERS
		22	SPRING , HANDLE RETURN
350SSKRK	REPAIR KIT	H3	O-RING RETAINER
		H4	O-RING
		H5	RETAINING RING
		H7	O-RING
		H10	SPRING, RELEIF VALVE
		H12	SEAL WASHER X 2
		H14	O-RING
		H14-1	SEAL RING
		H15	SEAL WASHER
		H25	O-RING
		H26	BALL 6
		H28	O-RING
		H29	O-RING
		H29-1	SEAL RING
		H31	BALL 10
		H32	BALL 8
		H34	BALL 5.5 (2)
		H36	SPRING, RELEIF VALVE
		H37	WASHER
		H38	O-RING
H39	OIL FILL PLUG		
H41	O-RING		
H42	O-RING		
H44	PIN 4X35		

*** ONLY PARTS WITH A "PART ORDER NUMBER" ARE AVAILABLE FOR SALE.**

DO NOT COPY OR DISTRIBUTE THIS MATERIAL WITHOUT PERMISSION OF AFF, INC.



MODEL 350SS - 3.5 TON DOUBLE-PUMPER FLOOR JACK

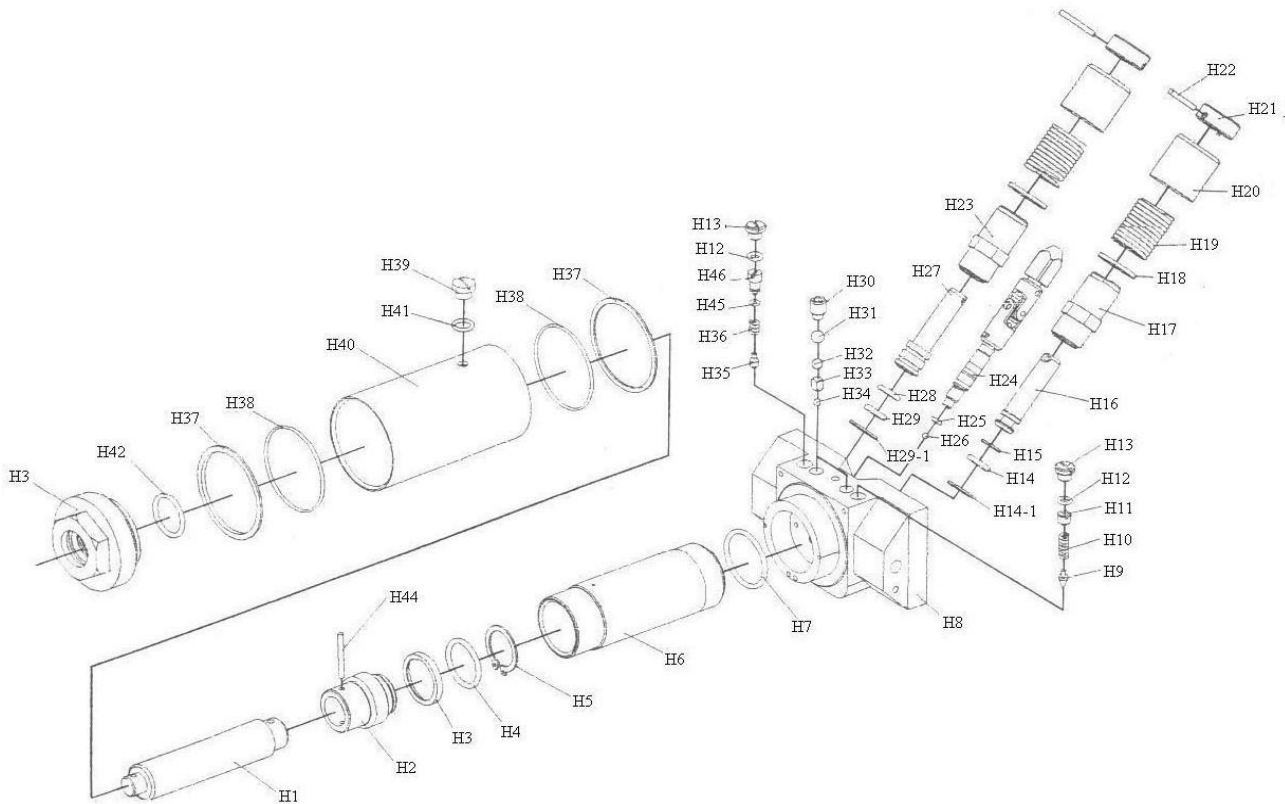
UPDATED 10-05

PART		KIT INCLUDES	
ORDER NUMBER	KIT DESCRIPTION	REF. #	DESCRIPTION
350SSKH23	VOLUME PUMP	H29	O-RING
		H29-1	SEAL WASHER
		H28	O-RING
		H27	PUMP PISTON
		H23	PUMP CYLINDER
		H18	PUMP INNER
		H19	PUMP RETURN SPRING
		H20	PUMP OUTER COVER
		H21	PUMP COVER
		H22	PIN 4X35
		350SSKH16	PRESSURE PUMP
H14-1	SEL WASHER		
H15	SEAL WASHER		
H16	PUMP PISTON		
H17	PUMP CYLINDER		
H18	PUMP INNER		
H19	PUMP RETURN SPRING		
H20	PUMP OUTER COVER		
H21	PUMP COVER		
H22	PIN 4X35		
NOT AVAILABLE SEPARATELY			
NOT AVAILABLE SEPARATELY		HU-2	RAM HEADER
NOT AVAILABLE SEPARATELY		HU-6	CYLINDER
NOT AVAILABLE SEPARATELY		HU-8	VALVE BASE
NOT AVAILABLE SEPARATELY		HU-9	SAFTEY VALVE
NOT AVAILABLE SEPARATELY		HU-11	REGULATING BOLT
NOT AVAILABLE SEPARATELY		HU-13	SEAL BOLT
NOT AVAILABLE SEPARATELY		HU-30	HIGH PRESSURE BOLT
NOT AVAILABLE SEPARATELY		HU-33	SEPARATOR
NOT AVAILABLE SEPARATELY		HU-35	SAFTEY VALVE
NOT AVAILABLE SEPARATELY		HU-40	OUTER CYLINDER
NOT AVAILABLE SEPARATELY		HU-43	TANK NUT
350SSK01	RETAINING RING	1	RETAINING RING FOR FRONT WHEEL
	& WASHER ONLY	2	WASHER
NOT AVAILABLE SEPARATELY		4	SIDE PLATE
NOT AVAILABLE SEPARATELY		5	BOLT
NOT AVAILABLE SEPARATELY		6	WASHER
NOT AVAILABLE SEPARATELY		7	HEX NUT
NOT AVAILABLE SEPARATELY		8	SPRING WASHER
NOT AVAILABLE SEPARATELY		9	HEX BOLT
NOT AVAILABLE SEPARATELY		13	PULL ROD
NOT AVAILABLE SEPARATELY		14	WASHER
NOT AVAILABLE SEPARATELY		15	HEX NUT
NOT AVAILABLE SEPARATELY		18	MACHINE SCREW (4)
NOT AVAILABLE SEPARATELY		19	INSPECTION PLATE
350SSK23		23	HANDLE BUMPER ONLY
NOT AVAILABLE SEPARATELY		29	SPRING
NOT AVAILABLE SEPARATELY		30	SPLIT PIN
NOT AVAILABLE SEPARATELY		31	TRACK RING
NOT AVAILABLE SEPARATELY		32	BLOCK LINKAGE
NOT AVAILABLE SEPARATELY		33	HEX NUT
NOT AVAILABLE SEPARATELY		34	WASHER
NOT AVAILABLE SEPARATELY		35	SHAFT ARM
NOT AVAILABLE SEPARATELY		36	GREASE FITTING
NOT AVAILABLE SEPARATELY		37	LONG LINKAGE
NOT AVAILABLE SEPARATELY		38	RETAINING RING
NOT AVAILABLE SEPARATELY		39	LIFT ARM ASSEMBLY

*** ONLY PARTS WITH A "PART ORDER NUMBER" ARE AVAILABLE FOR SALE.**

DO NOT COPY OR DISTRIBUTE THIS MATERIAL WITHOUT PERMISSION OF AFF, INC.

MODEL 350SS - 3.5 TON DOUBLE-PUMPER FLOOR JACK HYDRAULIC UNIT

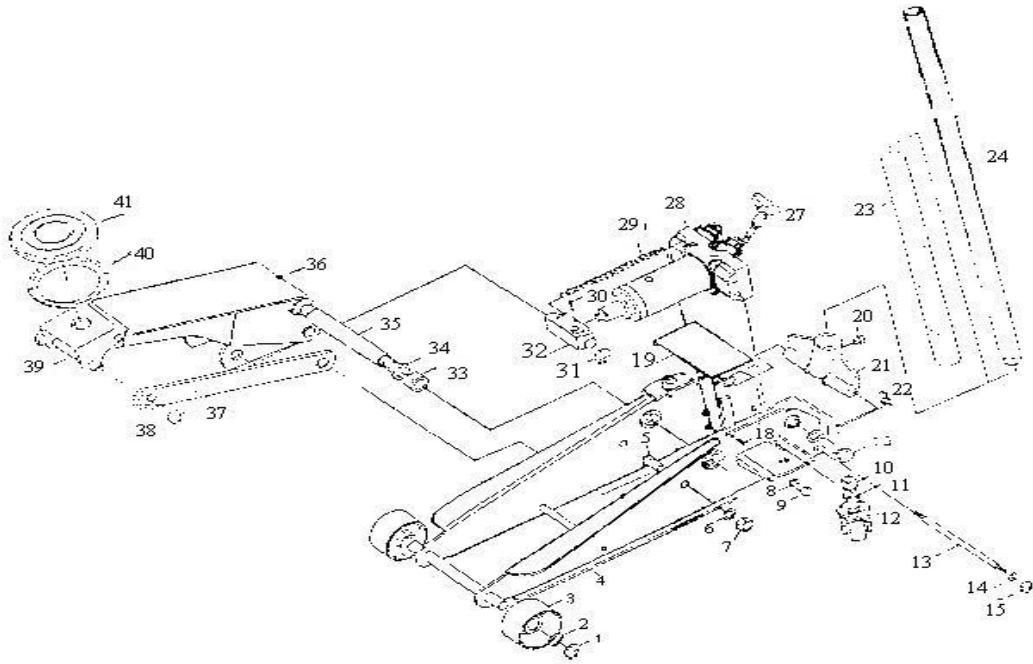


NO.	DESCRIPTIN	QTY	NO.	DESCRIPTIN	QTY	NO.	DESCRIPTIN	QTY
H1	RAM	1	H16	PUMP CORE	1	H31	BALL 10	2
H2	RAM HEADER	1	H17	PUMP CASE	1	H32	BALL 8	2
H3	O-RING RETURNER	1	H18	PUMP INNER CASE	2	H33	SEPARATOR	2
H4	O-RING	1	H19	PRESS SPRING	2	H34	BALL 5.5	2
H5	RETAINING RING	1	H20	PUMP OUTER CASE	2	H35	SAFETY VALVE	1
H6	CYLINDER	1	H21	PUMP COVER	2	H36	RELIEF VALVE SPRING	1
H7	O-RING	1	H22	PIN 4×30	2	H37	WASHER	2
H8	VALVE BASE	1	H23	PUMP CASE	1	H38	O-RING	2
H9	SAFETY VALVE	1	H24	RELEASE ASSEMBLY	1	H39	SEAL BOLT	1
H10	RELIEF VALVE SPRING	1	H25	O-RING	1	H40	CYLINDER OUTER CASE	1
H11	REGULATE BOLT	2	H26	BALL 6	1	H41	O-RING	1
H12	SEAL WASHER	2	H27	PUMP CORE	1	H42	O-RING	1
H13	SEAL BOLT	2	H28	O-RING	1	H43	TANK NUT	1
H14	O-RING	1	H29	O-RING	1	H44	PIN 4×35	1
H14-1	SEAL WASHER	1	H29-1	SEAL WASHER	1	H45	O-RING	1
H15	SEALING WASHER	1	H30	HIGH-PRESSURE BOLT	2	H46	REGULATE BOLT	1

*** ONLY PARTS WITH A "PART ORDER NUMBER" ARE AVAILABLE FOR SALE.**

DO NOT COPY OR DISTRIBUTE THIS MATERIAL WITHOUT PERMISSION OF AFF, INC.

MODEL 350SS - 3.5 TON DOUBLE-PUMPER FLOOR JACK EXPLODED VIEW



REF. NO.	DESCRIPTION	QTY.	REF. NO.	DESCRIPTION	QTY.
1	Retaining Ring	2	22	Torsion Spring	2
2	Washer 20	2	23	Handle Bumper	1
3	Wheel	2	24	Handle	1
4	Side Plate Assy	1	25		
5	Bolt	2	26		
6	Washer 16	2	27	Release Assembly	1
7	Hex Nut M16	2	28	Power Unit Assy.	1
8	Spring Washer 12	2	29	Spring	2
9	Hex Bolt M12 x 20	2	30	Split Pin 4 x 25	1
10	Nut M18	2	31	Retaining Ring 25	2
11	Spring Washer 12	2	32	Block Linkage	1
12	Caster Assembly	2	33	Hex Nut 24	2
13	Pull Rod	-	34	Washer 24	2
14	Washer 12	2	35	Shock Arm	1
15	Hex Nut M18	2	36	Grease Fitting	1
16	Bolt	2	37	Long Linkage	2
17	Spring Washer 16	2	38	Retaining Ring 18	2
18	Screws	4	39	Lift Arm Assembly	1
19	Inspection Flare	-	40	Saddle	1
20	Cap	1	41	Rubber Saddle Pad	1
21	Handle Socket	1	42	Complete Sec. Kit	1

*** ONLY PARTS WITH A "PART ORDER NUMBER" ARE AVAILABLE FOR SALE.**

DO NOT COPY OR DISTRIBUTE THIS MATERIAL WITHOUT PERMISSION OF AFF, INC.