



www.adatale.com
800.372.0519

Tactile Wayfinding
Product Submittal

Wherever you go...
There we are®





Detectable Warning Surface products by ADA Solutions meet the following requirements:

- **American Barriers Act (ABA) Accessibility Standards**
- **ADA Accessibility Guidelines (ADAAG)**
- **Department of Transportation ADA Standards for Transportation Facilities (2006)**
- **Department of Justice ADA Standards (2010)**
- **Public Rights-of-Way Accessibility Guidelines (PROWAG)**
- **California Building Standards Code, Title 24, California Code of Regulations**
- **Texas Accessibility Standards (TAS) 2012**
- **AASHTO M 333 Standard Specification for Detectable Warning Surfaces**
- **International Code Council (ICC) A117.1 Accessible and Usable Buildings and Facilities**



Detectable Warning Surface Products (Domes)

Fiberglass Reinforced Polymer Composite

PRODUCT MATRIX

Cast-In-Place Paver	Item ID	Dome Spacing	Part Wgt (lb)	Pcs/Box	Box Wgt	Pcs/Pallet	Pallet Wgt
2'x3'	2436PAV	2.40" x 2.35"	17	32	675	96	1,700
2'x4'	2448PAV	2.40" x 2.40"	22	25	625	75	1,710
2'x5'	2460PAV	2.40" x 2.40"	30	25	800	75	2,310
3'x4'	3648PAV	2.40" x 2.40"	34	25	925	50	1,760
3'x5'*	3660PAV	2.35" x 2.35"	41.5	25	1,125	50	2,135

Heritage Brick Paver	Item ID	Dome Spacing	Part Wgt (lb)	Pcs/Box	Box Wgt	Pcs/Pallet	Pallet Wgt
2'x2'	2424HB	2.40" x 2.40"	12.25	50	650	150	1,900
2'x2.5'	2430HB	2.40" x 2.31"	14.75	50	875	150	2,300

Cast-In-Place Replaceable	Item ID	Dome Spacing	Part Wgt (lb)	Pcs/Box	Box Wgt	Pcs/Pallet	Pallet Wgt
1'x1'	1212REP	2.40" x 2.40"	2.25	-	-	-	-
2'x2'	2424REP	2.40" x 2.40"	11	44	550	132	1,520
2'x3'	2436REP	2.40" x 2.28"	16	32	550	96	1,600
2'x4'	2448REP	2.40" x 2.40"	19.5	25	550	75	1,525
2'x5'	2460REP	2.40" x 2.40"	24.5	25	700	75	2,000
3'x4'	3648REP	2.40" x 2.40"	30	15	575	28	900
3'x5'	3660REP	2.40" x 2.40"	42	15	725	28	1,300
Radius 2' x 2.7'	24RADREP	2.40" x Radial	12.5	32	475	96	1,260

Surface Applied / Retrofit	Item ID	Dome Spacing	Part Wgt (lb)	Pcs/Box	Box Wgt	Pcs/Pallet	Pallet Wgt
1'x1' Short Edge	1212RET	2.40" x 2.40"	2	-	-	-	-
2'x2' Short Edge	2424RET	2.40" x 2.40"	8.5	160	1,500	160	1,500
2'x3'	2436RET	2.40" x 2.28"	11.5	112	1,350	112	1,350
2'x4'	2448RET	2.40" x 2.28"	15	80	1,350	80	1,350
2'x5'	2460RET	2.40" x 2.28"	19	80	1,675	80	1,675
3'x4'	3648RET	2.40" x 2.40"	25	50	1,325	50	1,325
3'x5'	3660RET	2.40" x 2.40"	30.5	50	1,700	50	1,700
Radius 2' x 2.7'	24RADRET	2.40" x Radial	9.5	112	1,150	112	1,150

Cast Iron

Cast-In-Place	Item ID	Dome Spacing	Part Wgt (lb)	Pcs/Box	Box Wgt	Pcs/Pallet	Pallet Wgt
24" x 12"	1224ID	2.40" x 2.40"	20.5	-	-	100	2,075
24" x 24"	2424ID	2.40" x 2.40"	39	-	-	50	2,000
24" x 30"	2430ID	2.40" x 2.40"	44	-	-	50	2,325
Wedge R15	15IDW	2.40" x Radial	5.5	-	-	325	-
Wedge R20	20IDW	2.40" x Radial	5.5	-	-	325	-
Wedge R25	25IDW	2.40" x Radial	6	-	-	325	-
Wedge R30	30IDW	2.40" x Radial	6.5	-	-	325	-

Directional Bar Tile

Fiberglass Reinforced Polymer Composite

Cast-In-Place Replaceable	Item ID	Bar Spacing	Part Wgt (lb)	Pcs/Box	Box Wgt	Pcs/Pallet	Pallet Wgt
6" x 48"	BARTILEREP0648	3.0"	4.5	-	-	-	-
1'x1'	BARTILE1212REP	3.0"	2	-	-	-	-
2'x2'	BARTILEREP2424	3.0"	8	-	-	-	-
Surface-Applied / Retrofit	Item ID	Bar Spacing	Part Wgt (lb)	Parts/Box	Box Wgt	Pcs/Pallet	Pallet Wgt
6" x 48"	BARTILEREP0648	3.0"	4.5	-	-	-	-
1'x1' Short Edge	BARTILE1212RET	3.0"	2	-	-	-	-
2'x2' Short Edge	BARTILEREP2424	3.0"	8	-	-	-	-

STANDARD COLOR OPTIONS

ADA's lineup of superior quality, heavy-duty fiberglass polymer composite detectable warning surface and directional bar tiles are UV stable with homogeneous color throughout the entire panel.

Directional Bar Tile

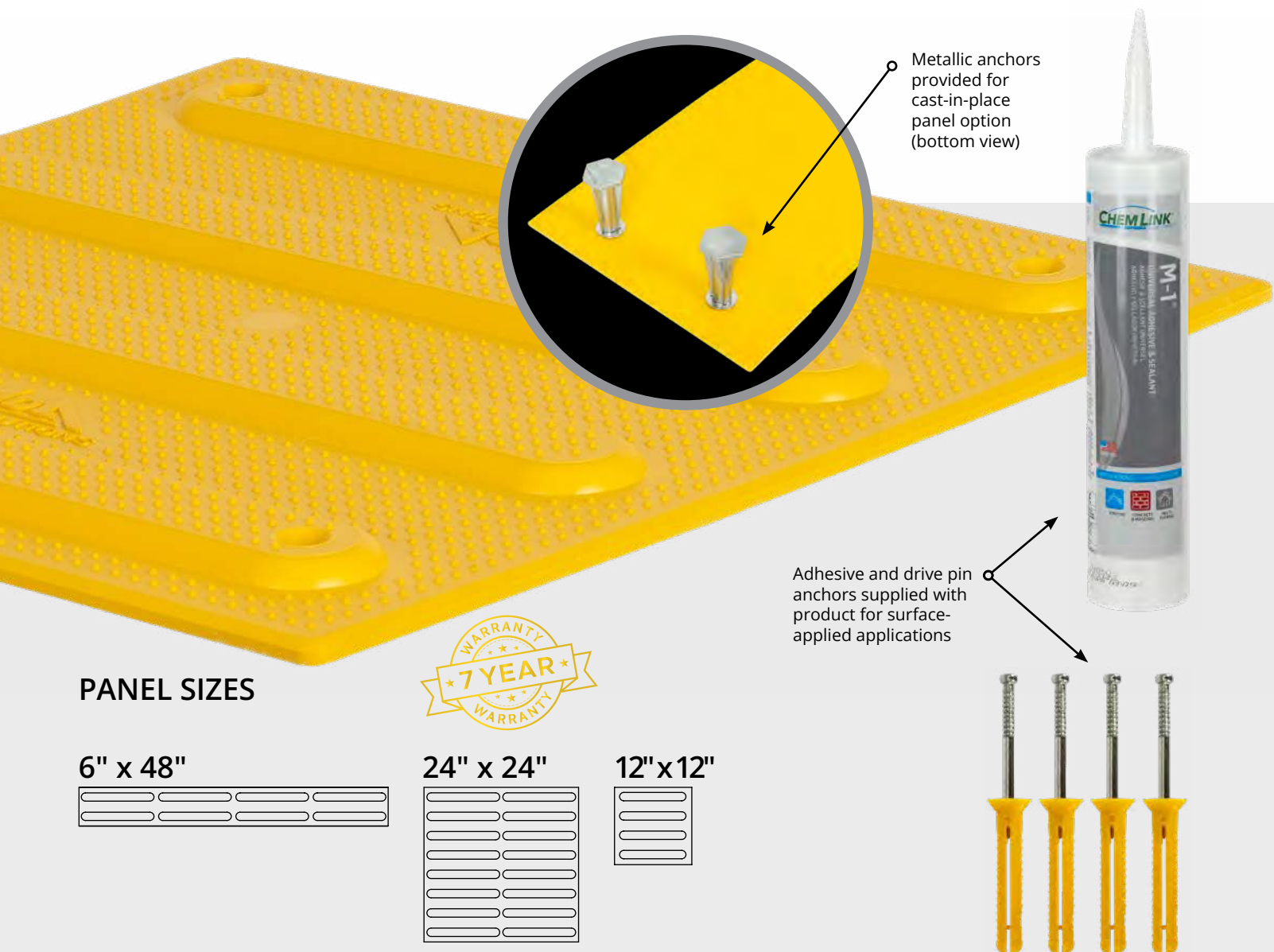
Cast-In-Place and Surface Applied



DIRECTIONAL BAR TILES

Directional Bar Tiles feature flat-topped elongated bars that provide a tactile surface for directional guidance or wayfinding. The bars are aligned with the direction of travel. Visually impaired pedestrians are provided pathway guidance by contact through handheld cane or through contact with foot. While technical and application guidance is still under development in the United States, many countries have requirements for directional bar tile for the public right of way. International Organization for Standardization (ISO) 23599 provides technical guidance for product dimensions and application.

Directional bar tile panels from ADA Solutions are available in several formats and sizes. Products are available for both cast-in-place (wet-set) and surface-applied installation methods. Complete wayfinding routes can be created in the field by combining directional bar tile pathways with detectable warning surface (truncated domes) panels as decision location markers and warning points.





PRODUCT DATA SHEET:

SECTION 32 17 26 – TACTILE WALKING SURFACE INDICATORS – DIRECTIONAL BAR TILES SURFACE APPLIED

Manufacturer:

ADA Solutions, a Division of SureWerx USA Inc.

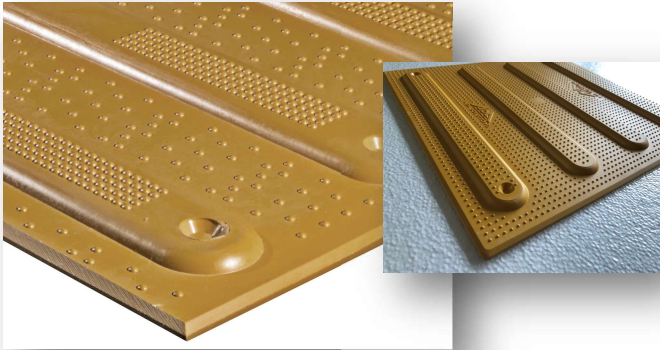
149 South Cucumber Street

Jefferson, Ohio 44047

Phone: 800-372-0519

Fax: 978-262-9125

Web: adatile.com



Description: Surface Applied Directional Bar Tiles (SA Bar Tiles) with flat-topped elongated bars provide directional guidance and orientation to visually impaired individuals. The tiles are applied directly to existing, cured concrete surfaces. Bars are orientated in the direction of travel. For pathway guidance, tiles are installed in a continuous series. A small grouping of SA Bar Tiles can provide directional orientation at street crossings or vehicle door locations at transit platforms.

Compliance: SA Bar Tiles are compliant with the following guidelines and requirements:

- American Barriers Act (ABA) Accessibility Standards
- ADA Accessibility Guidelines (ADAAG)
- Department of Transportation ADA Standards for Transportation Facilities (2006)
- Department of Justice ADA Standards (2010)
- Public Rights-of-Way Accessibility Guidelines (PROWAG)

Material: SA Bar Tiles are manufactured using exterior grade homogeneous (uniform color throughout thickness of product) glass and carbon reinforced polyester-based sheet molding compound (SMC) composite material.

Warranty: Guaranteed in writing for a period of seven (7) years from date of contract's final completion. The guarantee includes manufacturing defects, breakage, and deformation.

Panel Sizes:

6" x 48" (152.4 x 1,219.2 mm)

12" x 12" (304.8 x 304.8 mm)

12" x 24" (304.8 x 609.6 mm) parallel & perpendicular

24" x 24" (609.6 x 609.6 mm)

Colors: Color shall be single, homogeneous color throughout

- Federal Yellow FS No. 33538
- Brick Red FS No. 20109
- Clay Red FS No. 22144
- Safety Red FS No. 31350
- Black FS No. 37038
- Dark Gray FS No. 36118
- Safety Blue FS No. 15187
- White FS No 27925
- Seattle Yellow FS No 23594
- Stonescape Redstone
- Stonescape Graystone
- Stonescape Brownstone

Bar Dimensions: Directional tiles have a height of 0.2" (5.0 mm), base width nominal 1.3" (33.0 mm) and top width of nominal 0.90" (22.86 mm). Length of bars varies with each product size. Refer to product drawings for specific information on bar length.

Bar Spacing: Directional bars are spaced at 3.00" (76.2 mm) on center.

Part Thickness: SA Bar Tiles have a minimum part thickness of 0.1875" (4.76 mm).

Attachment Hardware: Tiles are supplied with tube adhesive and composite sleeve anchors with stainless steel drive pins.



Installation: SA Bar Tiles are applied directly to existing, cured concrete surfaces. Holes are drilled into the concrete at designated fastener locations using a 1/4 inch masonry bit and hammer drill. A 3/8 inch bead of tube adhesive is applied to the bottom of the tile along perimeter and within the interior areas prior to setting the tile.

Cutting: SA Bar Tiles can be cut into size using a 60-tooth carbide blade on a table saw or equivalent cutting device.

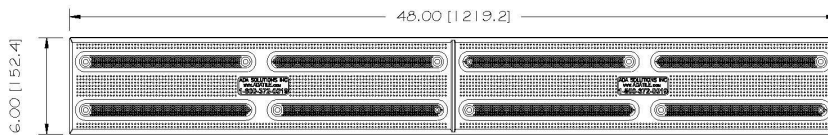
PRODUCT DATA SHEET:

SECTION 32 17 26 – TACTILE WALKING SURFACE INDICATORS – DIRECTIONAL BAR TILES SURFACE APPLIED

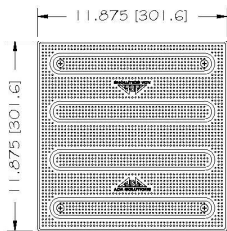
Product Testing and Physical Properties:

Standard	Standard Description	Value
ASTM D695	Compressive Strength	28,900 psi minimum
ASTM D790	Flexural Strength	21,000 psi minimum
ASTM D 638	Tensile Strength	11,000 psi minimum
ASTM C 1028	Static Coefficient of Friction (Slip Resistance)	1.18 Dry / 1.05 Wet
AS HB198:2014 (AS/NZS 4586)	Pendulum Sustainable Slip Resistance (SSR), Four S (96) hard rubber slider.	Pendulum Test Value (PTV), 56 Dry / 44 Wet; After 500 cycles of abrasion: 34 Wet
ASTM C501	Abrasion Resistance	Minimum 500
FM 5-594	Abrasion Resistance, Florida Method	Average Volume Loss: no more than 0.03 cm ³
NTPEP TP103 (2015)	High Temperature Thermal Cycling Exposure, (Sect 14) and Resistance to Impact from Falling Tup (Sect 10)	Min. 60 thermal cycles at 200°F (93.33°C) = maximum damage classification of 'C' at 20 ft-lb impact
ASTM G155	Accelerated Weathering	$\Delta E < 5.0$ at 2,000 hours min.
ASTM D570	Water Absorption	0.07%
ASTM C1026	Freeze/Thaw/Heat	No deterioration
ASTM D1037	Freeze/Thaw	No deterioration
ASTM D543	Chemical Stain Resistance	No reaction
ASTM D1308	Chemical Stain Resistance	No reaction
ASTM-B117	Salt and Spray	No change after 200 hours
ASTM E84	Flame Spread Index	20
AASHTO H20	Load Bearing Test	No Damage at 16,000 lbs.

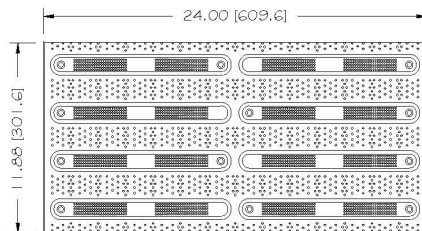
Product Drawings:



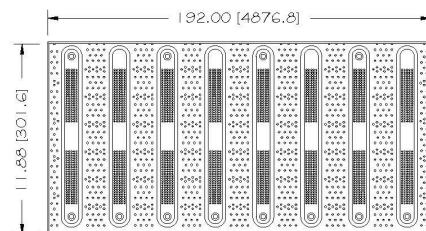
Part: 6" x 48"



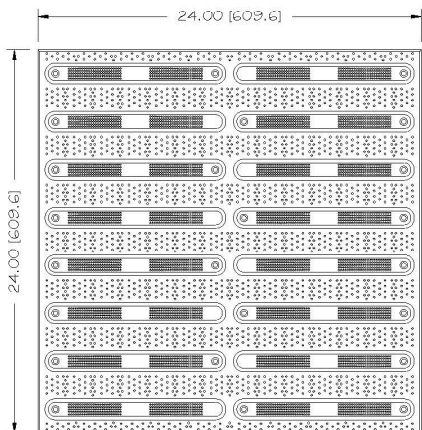
Part: 12" x 12"



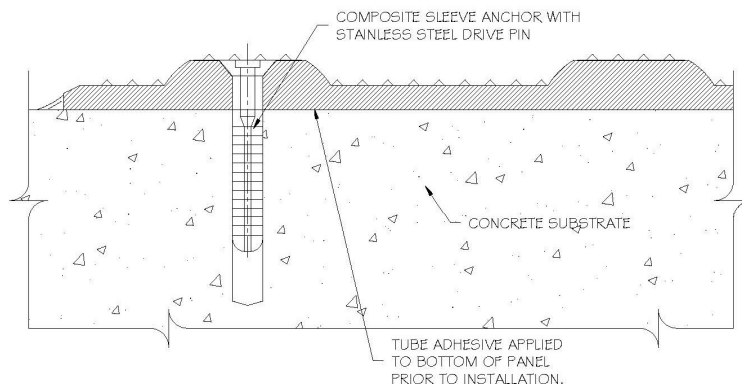
Part: 12" x 24" Parallel



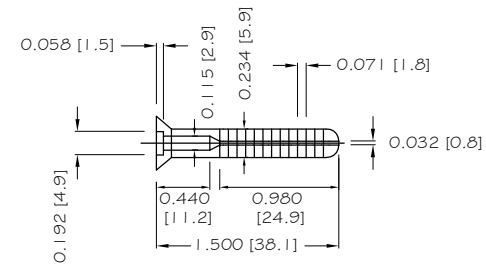
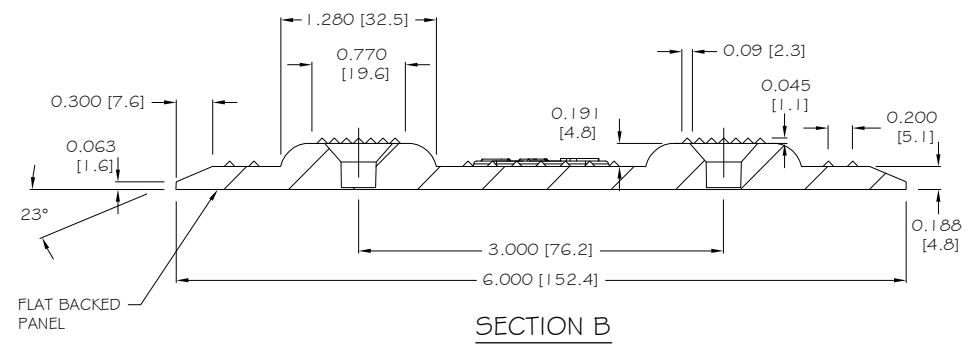
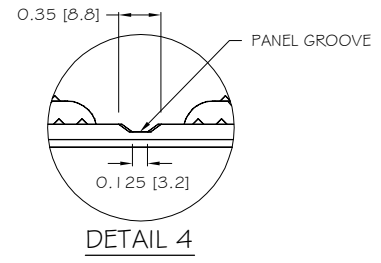
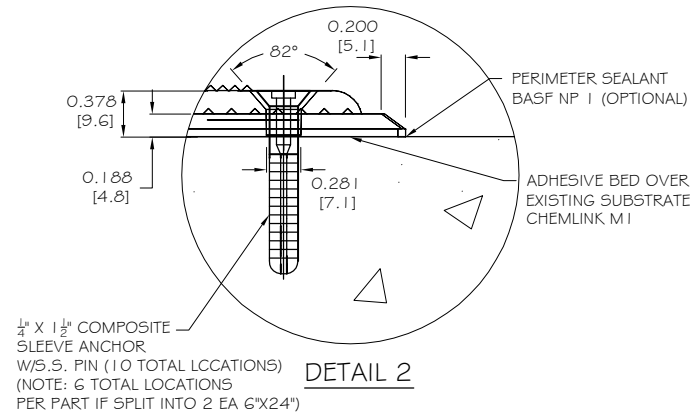
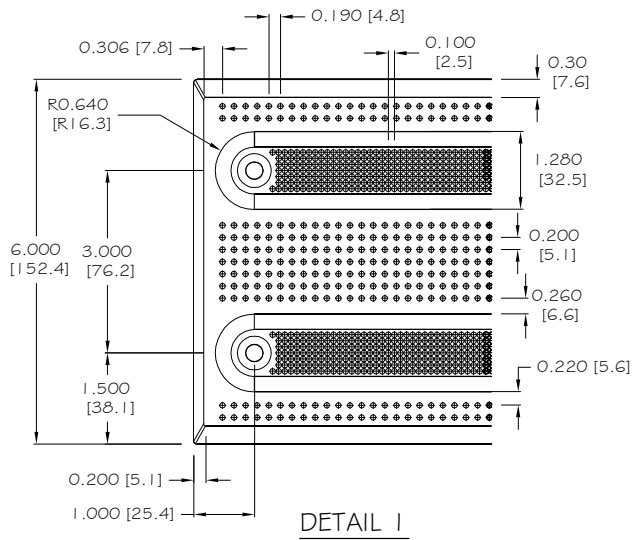
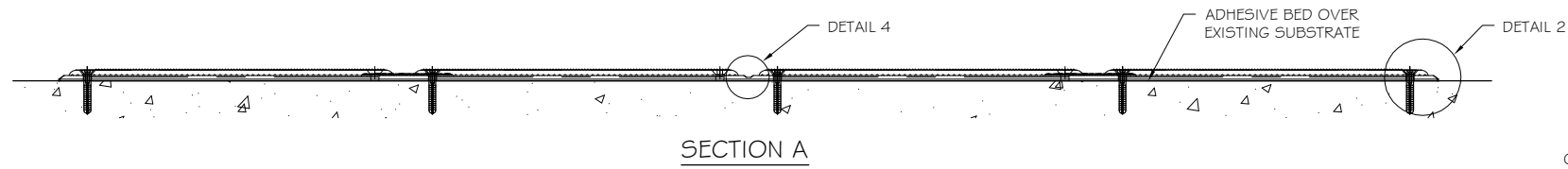
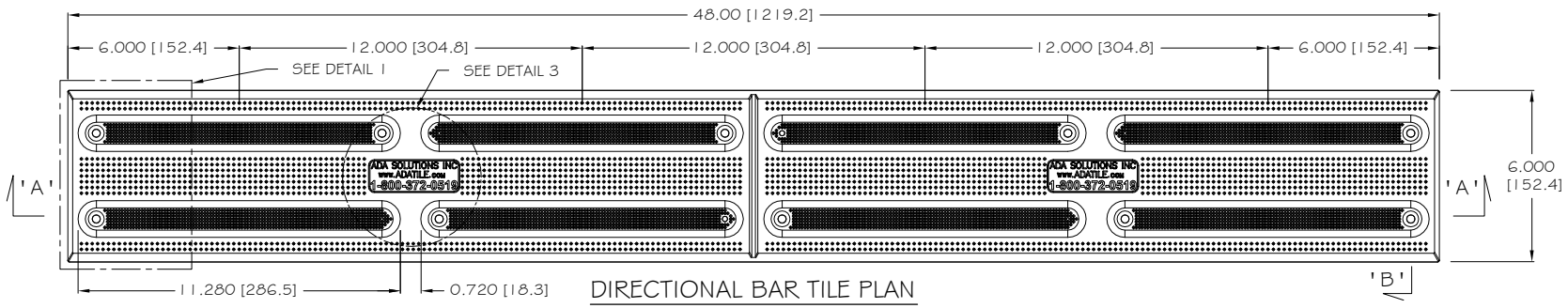
Part: 12" x 24" Perpendicular



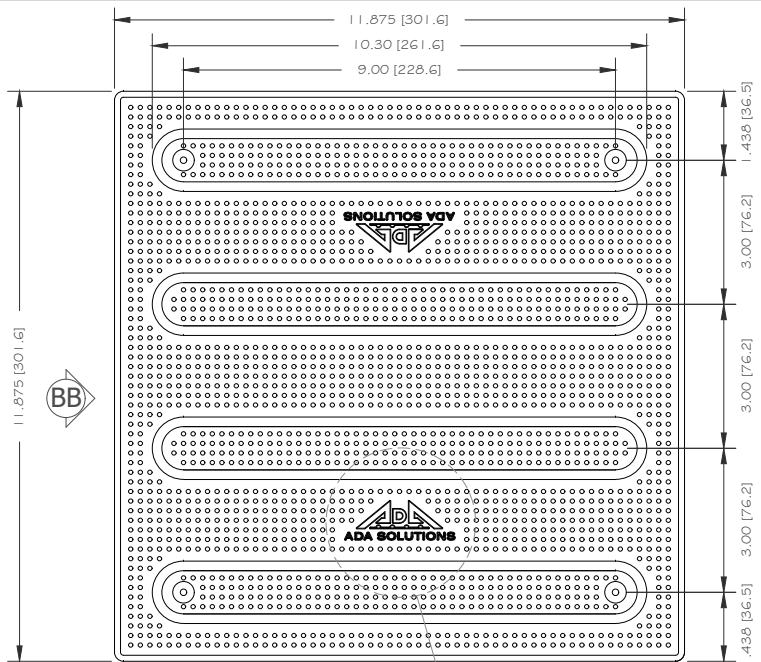
Part: 24" x 24"



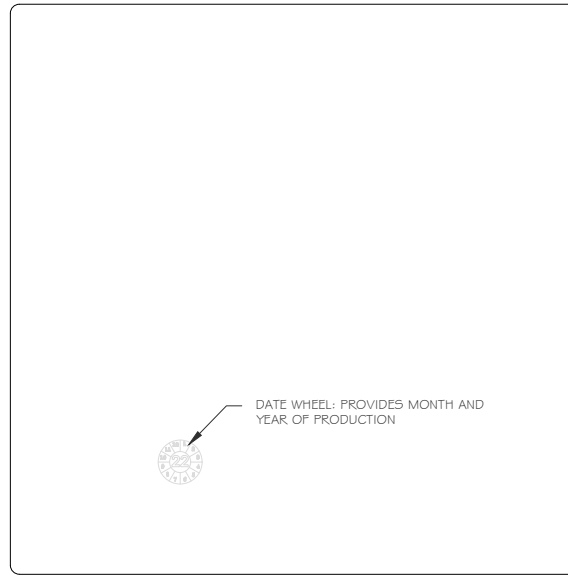
INSTALLED DETAIL



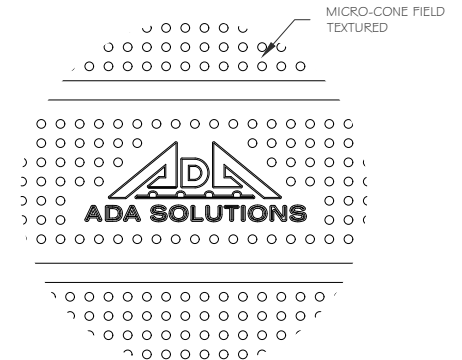
ALL DIMENSIONS NOMINAL PRIMARY DIMENSION INCHES mm IN PARENTHESES	
TRADE WAYFINDING TILE	PART NO. BARTILERETNF648_
MATERIAL SMC COMPOSITE	
PROJECT SURFACE APPLIED DIRECTIONAL BAR TILE PART SIZE: 6" x 48" (152mm x 1219mm) 10 FASTENER LOCATIONS (6 FASTENER LOCATIONS FOR 6"X24" PART) PLANS AND DETAILS	
DRAWING NO. ADA-DGTNF_648	DATE 01-26-18
 ADA SOLUTIONS, INC. DETECTABLE WARNING SURFACES FOR PEDESTRIAN CROSSINGS WWW.ADATILE.COM PHONE: (800)372-0519 EMAIL: INFO@ADATILE.COM	



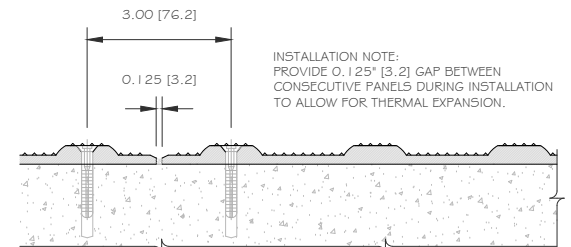
TOP VIEW



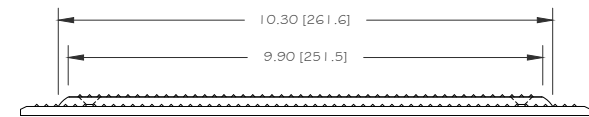
BOTTOM VIEW



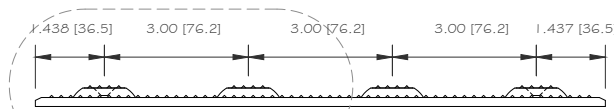
A LOGO DETAIL



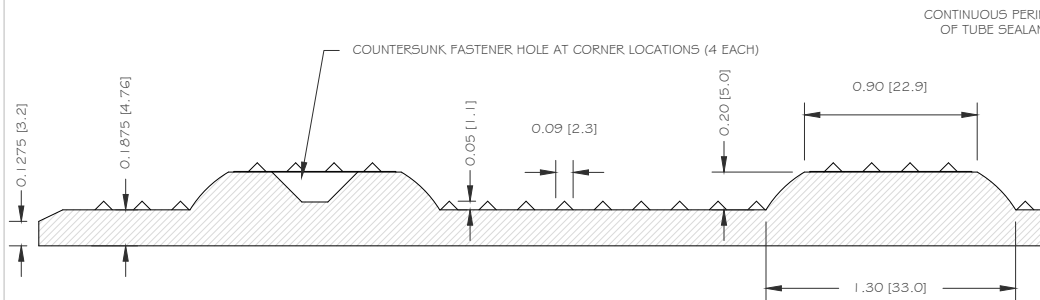
B INSTALLATION IN SERIES
(DIRECTIONAL ORIENTATION OF BARS MAY VARY)



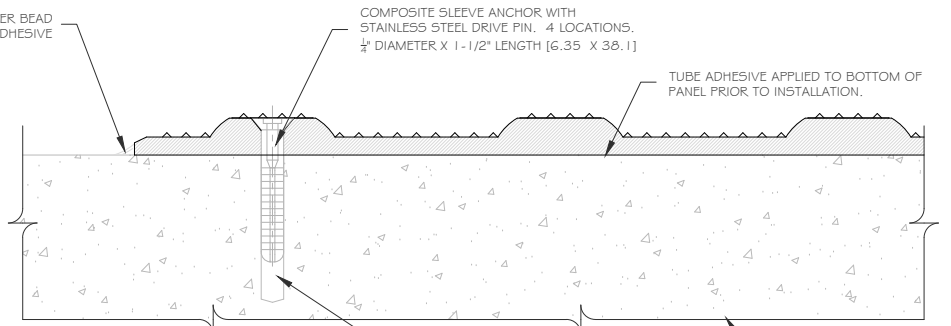
AA SIDE VIEW



BB END VIEW



C SECTION DETAIL

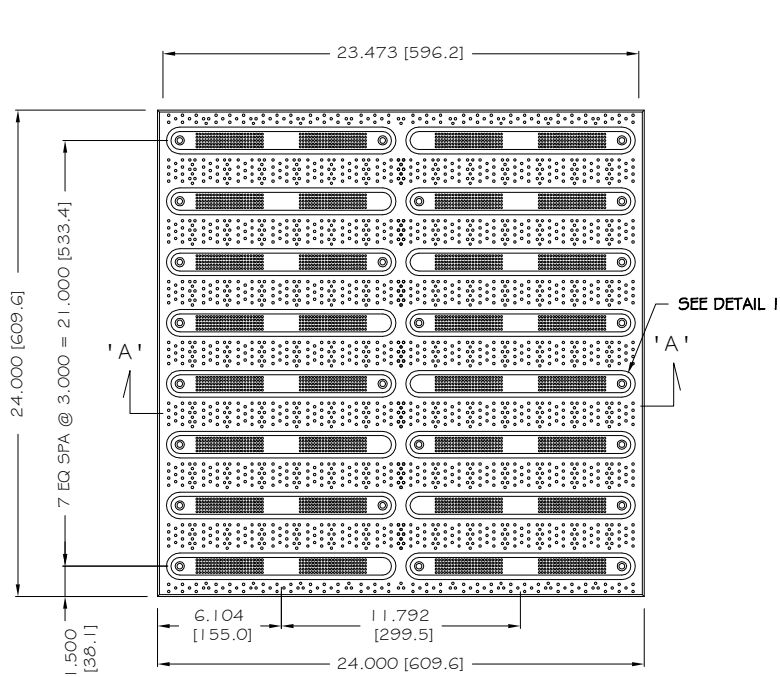


D INSTALLED DETAIL

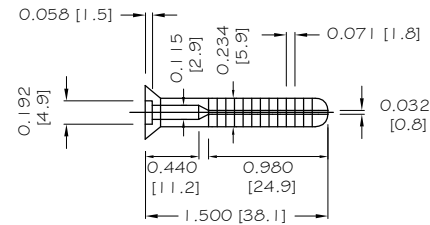
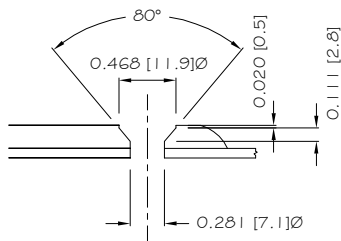
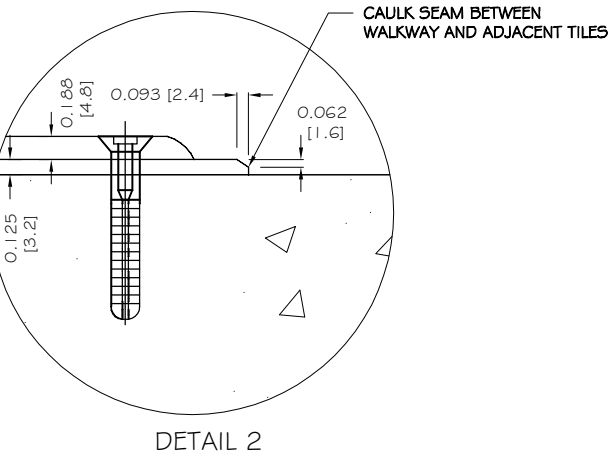
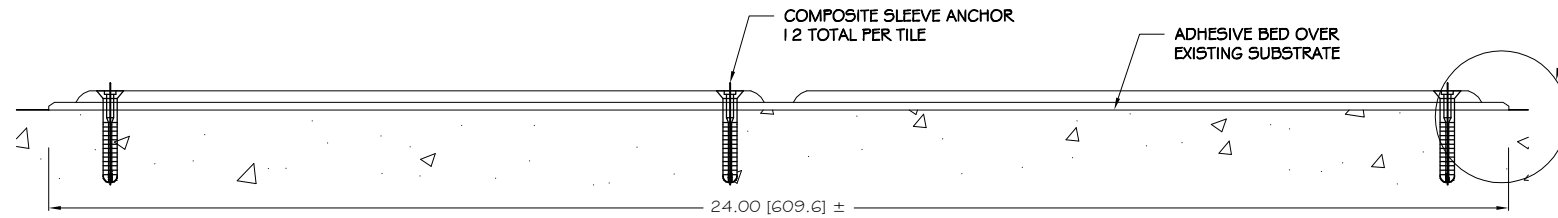
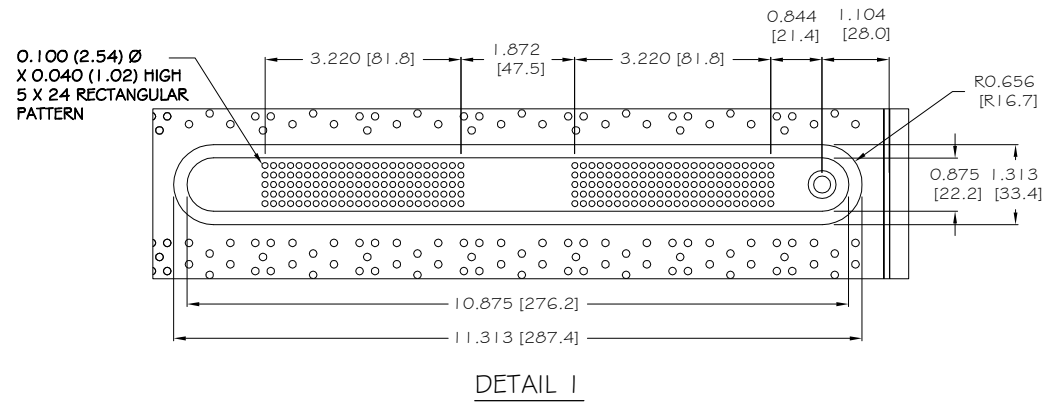
DIRECTIONAL WAYFINDING PANEL
12" x 12" Surf. Applied Directional Guide Tile
 PART SIZE: 11.875" (301.62 MM) X 11.875" (301.62 MM)
 3.00" (76.2 MM) DIRECTIONAL BAR SPACING


DIVISION		WEBSITE
TACTILE WALKING SURFACE INDICATORS		ADATILE.COM
MATERIAL		PHONE
FIBERGLASS REINFORCED POLYMER COMPOSITE SMC		1-800-372-0519
DRAWING NUMBER	DATE	DRAWING UNITS
ADA-BAR1212 Surface Applied	2022-06-10	INCHES [MM]
		EMAIL
		INFO@ADATILE.COM





DIRECTIONAL BAR TILE PLAN



ALL DIMENSIONS NOMINAL PRIMARY DIMENSION INCHES mm IN PARENTHESES	
TRADE WAYFINDING TILE	PART NO. BARTILERET2424_
MATERIAL SMC COMPOSITE	
PROJECT RETROFIT DIRECTIONAL BAR TILE PART SIZE: 24" x 24" (610mm x 610mm) 24-BOLT LOCATIONS PLANS AND DETAILS	
DRAWING NO. ADA-DGT_2424	DATE 11-09-16
 ADA SOLUTIONS, INC. DETECTABLE WARNING SURFACES FOR PEDESTRIAN CROSSINGS WWW.ADATILE.COM PHONE: (800)372-0519 EMAIL: INFO@ADATILE.COM	



SECTION 32 17 26 – TACTILE WAYFINDING

DIRECTIONAL BAR TILE SURFACE APPLIED

SECTION 1 – GENERAL

1.1 DESCRIPTION

- A. This Section includes Specifications for furnishing and installing Surface Applied Directional Bar Tile on concrete surface for locations shown on the Drawings, in accordance with the Contract Documents and as directed by the Engineer.

1.2 RELATED DOCUMENTS

- A. Drawings and general provisions of Contract, including General and Special Conditions and Division 1 Specifications Section, apply to this Section.
- B. Department of Justice ADA Standards (2010)
- C. Department of Transportation ADA Standards for Transportation Facilities (2006)
- D. Proposed Guidelines for Accessible Public Rights-of-Way (2023)
- E. California Title 24
- F. ISO 23599:2019-01 – Assistive products for blind and vision-impaired persons — Tactile walking surface indicators
- G. ISO 21542:2011 – Building Construction – Accessibility and Usability of the Built Environment
- H. ISO 9001 – Certificate No. 0502011, ISO 1409 and ISO/B 16949 Certified Manufacturing Facility located in Jefferson, Ohio
- I. Accessibility for Ontarians with Disabilities Act - (AODA)
- J. Canadian Standards Association – (CSA)

1.3 SUBMITTALS

- A. Product Data Sheet: Submit ADA Solutions literature describing products, installation procedures and routine maintenance.
- B. Samples for Verification Purposes: Submit two (2) Directional Bar Tile samples. Samples shall be properly labeled and shall contain the following information: Name of Project, Submitted By, Date of Submittal, and Manufacturer's Name.

- C. Shop Drawings: Submit the Standard Manufacturer Shop Drawings showing all pertinent characteristics of the Surface Applied Directional Bar Tile including profile, tile surface profile, plans of tile placement including joints, and material to be used as well as outlining installation materials and procedures.
- D. Material Test Reports: Submit all completed current test results from qualified, accredited independent testing laboratories by ASTM and UL/Canada guidelines and indicating that materials proposed for use follow specification requirements and meet or exceed the properties indicated on these specifications.
- E. Maintenance Instructions: Submit copies of the manufacturer’s specified installation and maintenance practices for each type of Directional Bar Tile and accessories as required.

1.4 QUALITY ASSURANCE

- A. Provide Surface Applied Directional Bar Tile and accessories as produced by a single manufacturer with a minimum of five years of experience in manufacturing Detectable Warning Surface products.
- B. Installer’s Qualifications: Engage an experienced installer certified in writing by Surface Applied Directional Bar Tile manufacturer as qualified for installation, who has completed installations similar in material, design, and extent to that indicated for the Contract.
- C. Directional Bar Tile must be compliant with ADAAG, PROWAG, and California Title 24 requirements.
- D. Directional Bar Tile shall meet or exceed the following test criteria using the most current test methods:

Standard	Standard Description	Value
ASTM D695	Compressive Strength	28,900 psi minimum
ASTM D790	Flexural Strength	21,000 psi minimum
ASTM D 638	Tensile Strength	11,000 psi minimum
ASTM C 1028	Standard Test Method for Determining the Static Coefficient of Friction (Slip Resistance)	1.18 Dry / 1.05 Wet
AS HB198:2014 (AS/NZS 4586)	Pendulum Sustainable Slip Resistance (SSR)	Pendulum Test Value (PTV), with Four S (96) hard rubber slider: 56 Dry / 44 Wet; After 500 cycles of abrasion: 34 Wet
ASTM C501	Abrasion Resistance	Minimum 500
FM 5-594	Abrasion Resistance, Florida Method	Average Volume Loss: no more than 0.03 cm ³
NTPEP TP103 (2015)	High Temperature Thermal Cycling Exposure, (Sect 14) and Resistance to Impact from Falling Tup (Sect 10)	Min. 60 thermal cycles at 200°F (93.33°C) = maximum damage classification of ‘C’ at 20 ft-lb impact
ASTM G155	Accelerated Weathering	ΔE<5.0 at 2,000 hours min.
ASTM D570	Water Absorption	0.07%
ASTM C1026	Freeze/Thaw/Heat	No deterioration
ASTM D1037	Freeze/Thaw	No deterioration
ASTM D543	Chemical Stain Resistance	No reaction
ASTM D1308	Chemical Stain Resistance	No reaction
ASTM-B117	Salt and Spray	No change after 200 hours
ASTM E84	Flame Spread Index	20
AASHTO H20	Load Bearing Test	No Damage at 16,000 lbs.

E. Stamped concrete, polymer concrete, concrete pavers/tile, or brick products are not acceptable for use on this project.

1.5 DELIVERY, STORAGE AND HANDLING

- A. Directional Bar Tile shall be suitably packaged or crated to prevent damage in shipment and handling. Finished surfaces shall be protected by sturdy plastic wrappings to protect the tile from concrete residue during installation.
- B. Directional Bar Tile shall be delivered to a location at the building site for storage before installation. Store tiles in an area that is within an acceptable temperature range 40°F - 90°F (4°C - 32°C) and maintain the storage facility in a clean, dry condition to prevent contamination or damage to the tiles.

1.6 SITE CONDITIONS

- A. Environmental Conditions and Protection: Maintain a minimum temperature of 40°F (4°C) in spaces to receive Directional Bar Tile for at least 24 hours before installation, during installation, and for not less than 24 hours after installation.
- B. The use of water for work, cleaning, or dust control, etc. shall be contained and controlled and shall not be allowed to come in to contact with the general public. Provide barricades or screens to protect pedestrians.

1.7 MANUFACTURER'S WARRANTY

- A. Surface Applied Directional Bar Tile shall be guaranteed in writing for a period of seven (7) years from date of Contract's final completion. The guarantee includes manufacturing defects, breakage, and deformation.

1.8 INSTALLATION WARRANTY

- A. Surface Applied Directional Bar Tile installation shall be warranted in writing for two (2) years by the installer. Products must be guaranteed from defective work and loosening of tiles.

SECTION 2 – PRODUCTS

2.1 MANUFACTURERS

- A. Surface Applied Directional Bar Tile by ADA Solutions, 149 South Cucumber Street, Jefferson, OH 44047. Toll-Free: 800-372-0519, sales@adatile.com, www.adatile.com.
- B. Tile Sizes
 - a. 24" x 24" (609.6 x 609.6 mm), 2 rows of 8 bars
 - b. 12" x 12" (304.8 x 304.8 mm), 1 row of 4 bars
 - c. 6" x 48" (152.4 x 1219.2 mm), 4 rows of 2 bars
- C. Existing engineered and field-tested products, which have been in successful service for five (5) years are subject to specification compliance, may be incorporated in the project and shall meet or exceed the specified test criteria and characteristics. Requests for Approved Equal status must be submitted and approved by the Owner before the Tender Phase of the project.

2.2 MATERIALS

- A. Composition: Surface Applied Directional Bar Tile shall be manufactured using a matte finish exterior grade homogeneous (uniform color throughout thickness of product) glass and carbon reinforced polyester based Sheet Molding Compound (SMC) composite material. Raised directional bars must contain fiberglass reinforcement within the bars for superior structural integrity and impact resistance. A matte finish will be required on the Tactile Surface for superior slip resistance performance superior to that offered by a gloss finish. Use of Tactile Surface Products employing coatings or featuring layers of material with differing composition, performance, or color properties is expressly prohibited under this Section.
- B. Color: Color shall be single, homogeneous color throughout tile
 - 1. Federal Yellow (Y), Federal Standard Color No. 33538
 - 2. Brick Red (R), Federal Standard Color No. 20109
 - 3. Clay Red (CR) Federal Standard Color No. 22144
 - 4. Safety Red (SR) Federal Standard No. 31350
 - 5. Black (B) Federal Standard Color No. 37038
 - 6. Dark Gray (G) Federal Standard Color No. 36081
 - 7. Safety Blue (B) Federal Standard Color No. 15187
 - 8. White (W) Federal Standard Color No 27925
 - 9. Seattle Yellow (SY) Federal Standard Color No. 23594
- C. Directional Bars: Raised directional bars of 0.20" (5.0 mm) nominal height, 11.0" (279.4 mm) minimum length, base width of 1.3" (33 mm) nominal and top width of 0.90" (22.86 mm) nominal. Spacing between parallel bars shall be 3.0" (76.2 mm) on center.

SECTION 3 – EXECUTION

3.1 PREPARATION

- A. During all concrete pouring and Directional Bar Tile installation procedures, ensure adequate safety guidelines are in place and that they are in accordance with the applicable industry and government standards.
- B. The physical characteristics of the concrete shall be consistent with the Contract Specifications while maintaining a slump range of 4 - 7 to permit solid placement of the Surface Applied Directional Bar Tiles. An overly wet mix will cause the tiles to float. Under these conditions, suitable weights such as 2 concrete blocks or sandbags (25 pounds) may be placed on each tile.
- C. The concrete shall be poured and finished, true and smooth to the required dimensions and slope prior to tile placement.

3.2 EQUIPMENT

- A. Contractor shall provide all tools, equipment, and services required for satisfactory installation per manufacturer's instruction as Incidental Work. Equipment which may be required include typical mason's tools, a 4-foot level with electronic slope readout, 25 lb. (11.4 kg) weights, vibrator, rubber mallet with 2" x 4" x 10" (51 mm x 102 mm x 254 mm) wood tamping plate, and a device for cutting the Directional Bar Tile.

3.3 INSTALLATION

- A. Contractor will not be allowed to install Surface Applied Directional Bar Tiles until all submittals have been reviewed and approved by the Engineer. Tiles shall be installed per manufacturer's instructions.

- B. To the maximum extent possible, the Directional Bar Tiles shall be oriented in a straight, aligned row at locations indicated on design drawings. Alignment between successive tiles should be within 0.125" (3.17 mm). For installation with continuous runs of multiple tiles, allow 1/8" (3.17 mm) separation between successive tiles to for expansion/contraction.
- C. Tiles shall be cut into size and configuration indicated on the Drawings using a 60 tooth carbide blade on a table saw or equivalent cutting device. For specific instructions for cutting and setting refer to Detectable Warning Surface manufacturer's written instructions.
- D. Surface Applied Directional Bar Tiles can be installed over an existing concrete substrate using either Surface Mount or Recessed, Flush Mounted approach. For Recessed, Flush Mounted installation create a 0.25" (6.35 mm) nominal recess in existing concrete with milling machine. Width of recess cut shall be approximately 0.25" (6.35 mm) wider than finished product width.
- E. For proper curing of adhesive and sealant, air and substrate temperatures must maintain a minimum temperature of 40°F (4°C) for at least 8 hours after installation of tiles.
- F. Verify that substrate is flat across application area of tiles. Field grinding of concrete may be required to remove high spots and assure a flat substrate is achieved prior to tile installation.
- G. Prior to application of adhesive to concrete substrate, remove any residual contamination by mechanical abrasion, sand blasting, or power washing. On green concrete, remove all release agents, friable and loose concrete. Dry all visible and standing water prior to applying adhesive.
- H. Apply minimum 3/8" (9.5 mm) bead of adhesive on the backside of tiles continuous around perimeter located approximately 1" (25.4 mm) from outer edge and on interior surface in continuous rows approximately 2" (50.8 mm) on center. For superior adhesion and full panel support in high traffic areas, complete coverage of adhesive may be desired
- I. Set the Directional Bar Tiles onto concrete and allow approximately 0.125" (3.17 mm) separation between successive tiles for expansion/contraction.
- J. Drill 0.25" (6.35 mm) holes to a depth of 2.0" (50.8 mm) at all fastener locations provided in top of tile with a fastener located in each corner at a minimum. Additional attachment locations may be required at edge of cut tiles or as needed to properly secure panel to substrate. Locate new holes through center of bar tops using a 5 point 0.5" (12.7 mm) x 82 degree countersink drill bit.
- K. Mechanically fasten Directional Bar Tiles to the concrete substrate using manufacturer supplied composite sleeve anchors with stainless steel drive pins. Ensure that the fastener has been set to full depth, straight and true. Care should be taken when setting the fastener to avoid striking the surface of the tile.
- L. Apply a continuous bead of sealant around the perimeter edge the installed tile and tool smooth into joint edge.
- M. Do not allow foot traffic on newly installed tile until the perimeter edge sealant has fully cured.

3.4 CLEANING AND PROTECTING

- A. Protect Surface Applied Directional Bar Tiles against damage during construction period to comply with tile manufacturer's Specifications.

- B. During and after the tile installation and the concrete curing stage, it is imperative that there are no walking, leaning or external forces placed on the tile to rock the tile, causing a void between the underside of the tile and the concrete.
- C. Remove Protective Plastic Sheeting from tile within 24 hours of installation of the tile. Particularly under hot weather conditions (80 degrees or higher), plastic sheeting will adhere strongly (resulting in difficult removal of same) to tile when not removed quickly.
- D. If requested by the Project Manager, clean tiles not more than four (4) days prior to date scheduled for inspection intended to establish date of substantial completion in each area of project. Clean tile by method specified by tile manufacturer.

END OF SECTION

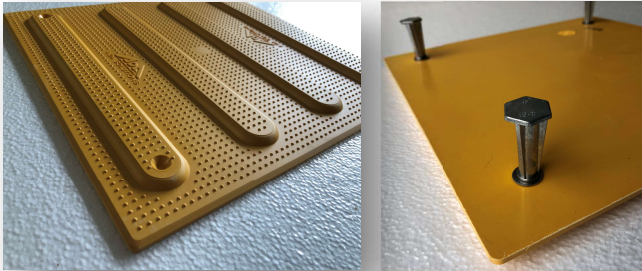


PRODUCT DATA SHEET:

SECTION 32 17 26 – TACTILE WALKING SURFACE INDICATORS – DIRECTIONAL BAR TILES CAST-IN-PLACE REPLACEABLE

Manufacturer:

ADA Solutions, a Division of SureWerx USA Inc.
149 South Cucumber Street
Jefferson, Ohio 44047
Phone: 800-372-0519
Fax: 978-262-9125
Web: adatile.com



Colors: Color shall be single, homogeneous color throughout

- Federal Yellow FS No. 33538
- Brick Red FS No. 20109
- Clay Red FS No. 22144
- Safety Red FS No. 31350
- Black FS No. 37038
- Dark Gray FS No. 36118
- Safety Blue FS No. 15187
- White FS No 27925
- Seattle Yellow FS No 23594
- Stonescape Redstone
- Stonescape Graystone
- Stonescape Brownstone

Description: Cast-In-Place Replaceable Directional Bar Tiles (CIP Bar Tiles) with flat-topped elongated bars provide directional guidance and orientation to visually impaired individuals. The tiles are embedded in the newly poured concrete. Bars are orientated in the direction of travel. For pathway guidance, tiles are installed in a continuous series. A small grouping of CIP Bar Tiles can provide directional orientation at street crossings or vehicle door locations at transit platforms.

Bar Dimensions: Directional tiles have a height of 0.2" (5.0 mm), base width nominal 1.3" (33.0 mm) and top width of nominal 0.90" (22.86 mm). Length of bars varies with each product size. Refer to product drawings for specific information on bar length.

Bar Spacing: Directional bars are spaced at 3.00" (76.2 mm) on center.

Part Thickness: CIP Bar Tiles have a minimum part thickness of 0.1875" (4.76 mm). A Heavy-Duty version is available with a 0.375" (9.52 mm) minimum thickness. Please contact ADA Solutions for more information on the availability of the Heavy-Duty version.

Compliance: CIP Bar Tiles are compliant with the following guidelines and requirements:

- American Barriers Act (ABA) Accessibility Standards
- ADA Accessibility Guidelines (ADAAG)
- Department of Transportation ADA Standards for Transportation Facilities (2006)
- Department of Justice ADA Standards (2010)
- Public Rights-of-Way Accessibility Guidelines (PROWAG)

Anchoring: Tiles shall feature corrosion resistant zinc alloy concrete anchor inserts minimum 1.5" (38.1mm) long with 0.25" (6.35 mm) diameter x 1.5" (38.1 mm) long stainless-steel flat head screws.

Material: CIP Bar Tiles are manufactured using exterior grade homogeneous (uniform color throughout thickness of product) glass and carbon reinforced polyester-based sheet molding compound (SMC) composite material.

Installation: CIP Bar Tiles are wet set into a minimum 2 1/2" (63.5 mm) depth of concrete (4"-7" slump). Tiles are pressed into the wet concrete and tamped or vibrated to ensure that there are no voids or air pockets. The field of the tile is to be flush to the adjacent concrete surface.

Warranty: Guaranteed in writing for a period of seven (7) years from date of contract's final completion. The guarantee includes manufacturing defects, breakage, and deformation.

Replacement: CIP Bar Tiles may be replaced by removing the screws and inserting a new panel into the existing formed cavity. The original anchor inserts remain in place.

Cutting: CIP Bar Tiles can be cut into size using a 60-tooth carbide blade on a table saw or equivalent cutting device.

Panel Sizes:

6" x 48" (152.4 x 1,219.2 mm)
12" x 12" (304.8 x 304.8 mm)
12" x 24" (304.8 x 609.6 mm) parallel & perpendicular
24" x 24" (609.6 x 609.6 mm)



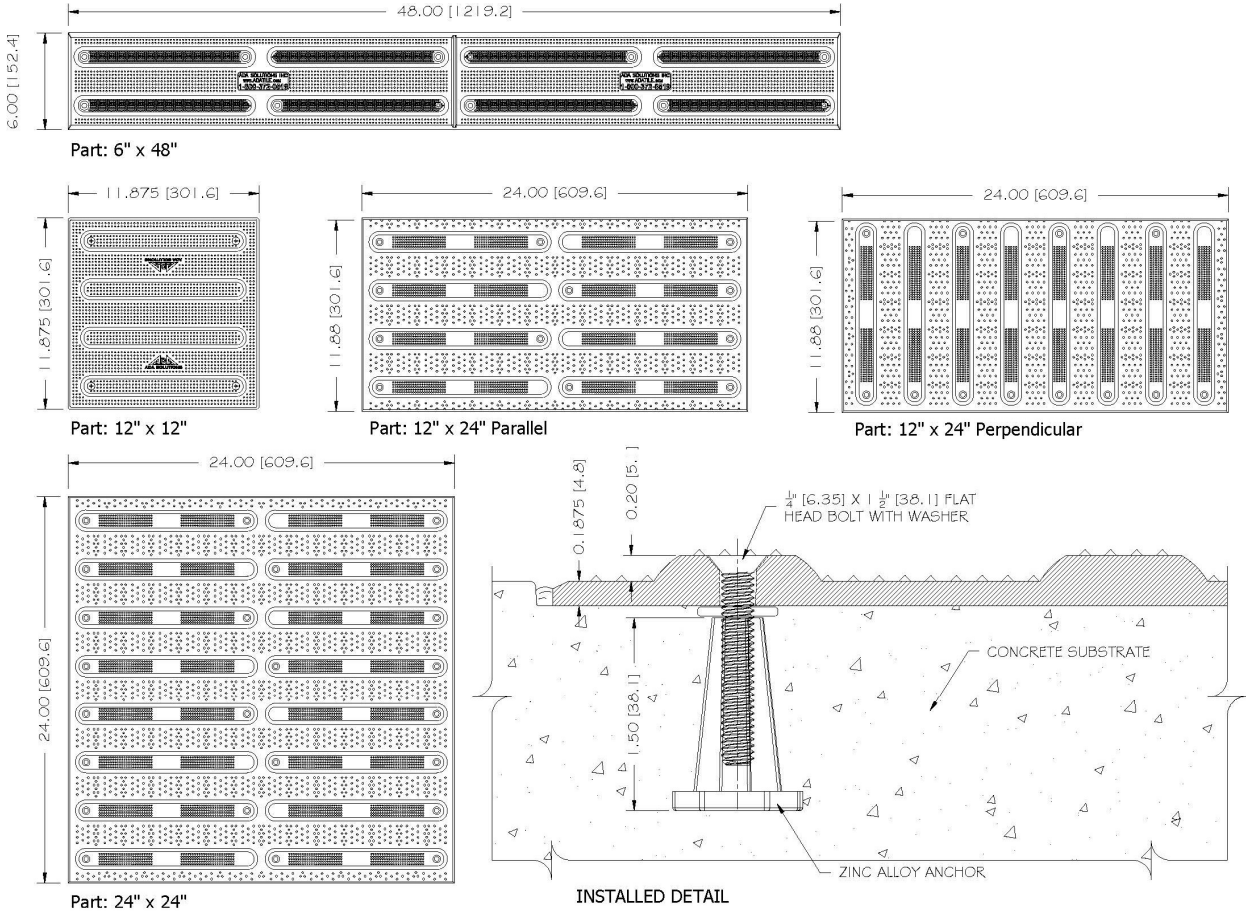
PRODUCT DATA SHEET:

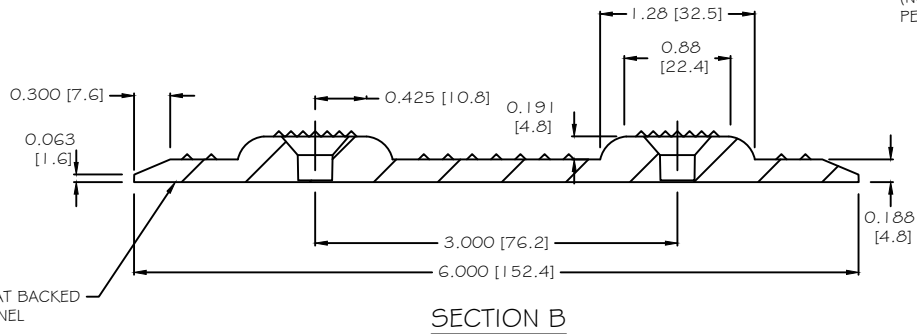
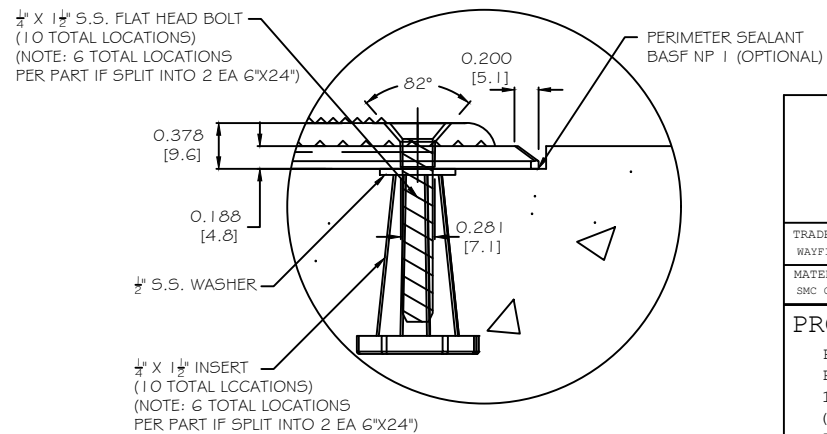
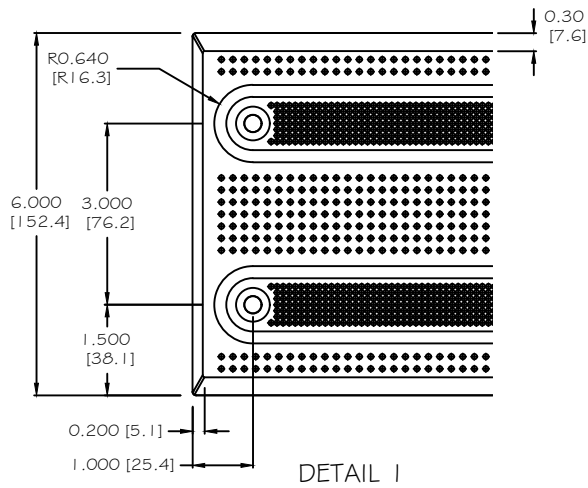
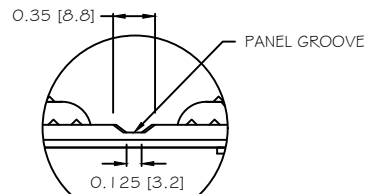
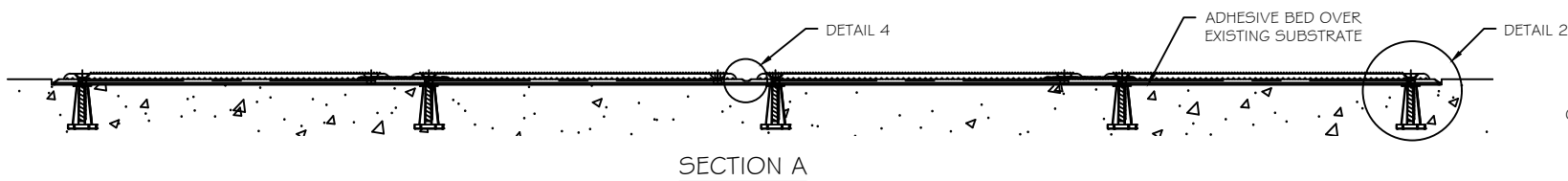
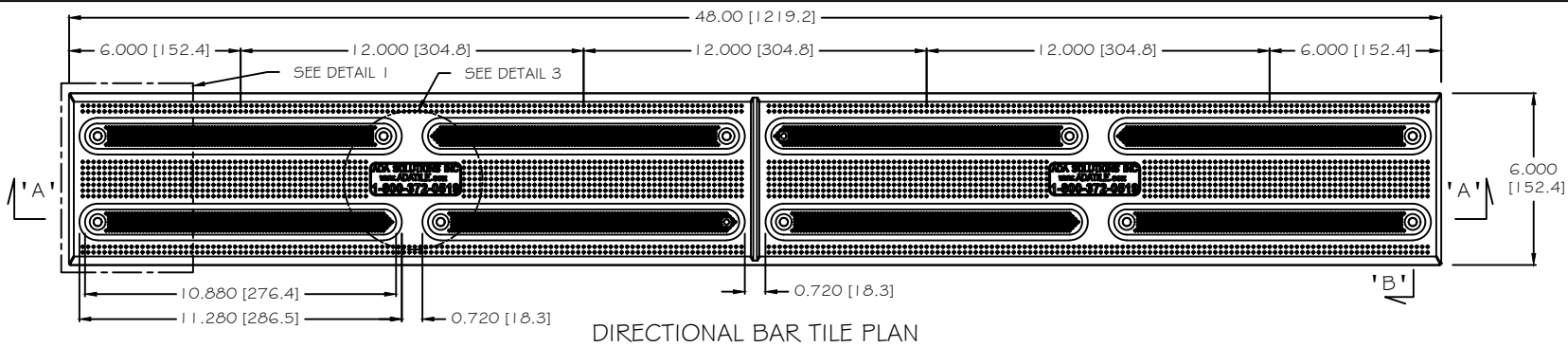
SECTION 32 17 26 – TACTILE WALKING SURFACE INDICATORS – DIRECTIONAL BAR TILES CAST-IN-PLACE REPLACEABLE

Product Testing and Physical Properties:

Standard	Standard Description	Value
ASTM D695	Compressive Strength	28,900 psi minimum
ASTM D790	Flexural Strength	21,000 psi minimum
ASTM D 638	Tensile Strength	11,000 psi minimum
ASTM C 1028	Static Coefficient of Friction (Slip Resistance)	1.18 Dry / 1.05 Wet
AS HB198:2014 (AS/NZS 4586)	Pendulum Sustainable Slip Resistance (SSR), Four S (96) hard rubber slider.	Pendulum Test Value (PTV), 56 Dry / 44 Wet; After 500 cycles of abrasion: 34 Wet
ASTM C501	Abrasion Resistance	Minimum 500
FM 5-594	Abrasion Resistance, Florida Method	Average Volume Loss: no more than 0.03 cm ³
NTPEP TP103 (2015)	High Temperature Thermal Cycling Exposure, (Sect 14) and Resistance to Impact from Falling Tüp (Sect 10)	Min. 60 thermal cycles at 200°F (93.33°C) = maximum damage classification of 'C' at 20 ft-lb impact
ASTM G155	Accelerated Weathering	ΔE<5.0 at 2,000 hours min.
ASTM D570	Water Absorption	0.07%
ASTM C1026	Freeze/Thaw/Heat	No deterioration
ASTM D1037	Freeze/Thaw	No deterioration
ASTM D543	Chemical Stain Resistance	No reaction
ASTM D1308	Chemical Stain Resistance	No reaction
ASTM-B117	Salt and Spray	No change after 200 hours
ASTM E84	Flame Spread Index	20
AASHTO H20	Load Bearing Test	No Damage at 16,000 lbs.

Product Drawings:





ALL DIMENSIONS NOMINAL
PRIMARY DIMENSION INCHES
mm IN PARENTHESES

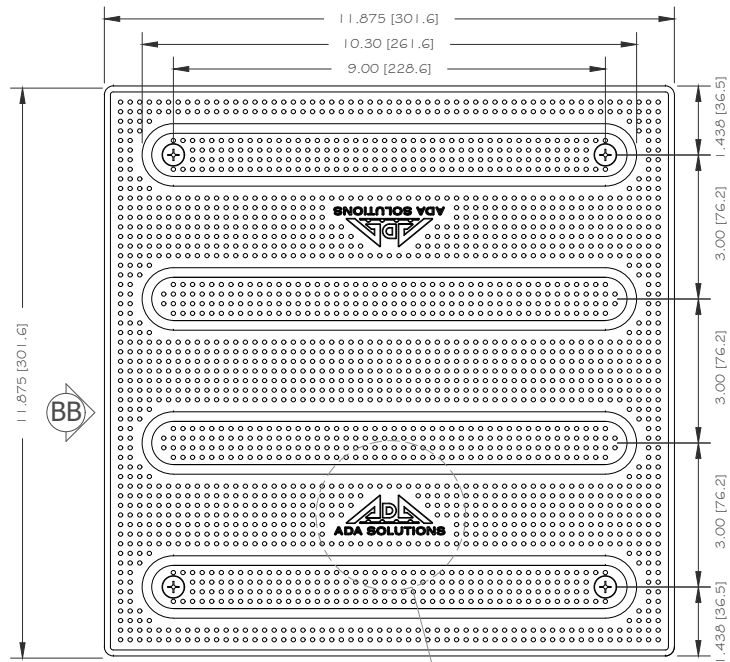
TRADE WAYFINDING TILE	PART NO. BARTILEREPNF648
MATERIAL SMC COMPOSITE	

PROJECT
REPLACEABLE DIRECTIONAL BAR TILE PART SIZE: 6" x 48" (152mm x 1219mm) 10 FASTENER LOCATIONS (6 FASTENER LOCATIONS FOR 6"x24" PART) PLANS AND DETAILS

DRAWING NO. ADA-DGTNF_REP_648	DATE 2020-08-11
----------------------------------	--------------------



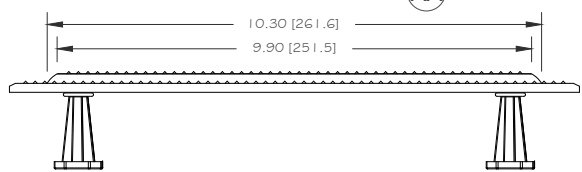
WWW.ADATILE.COM
PHONE: (800) 372-0519
EMAIL: ADA-Info@SureWex.com



TOP VIEW

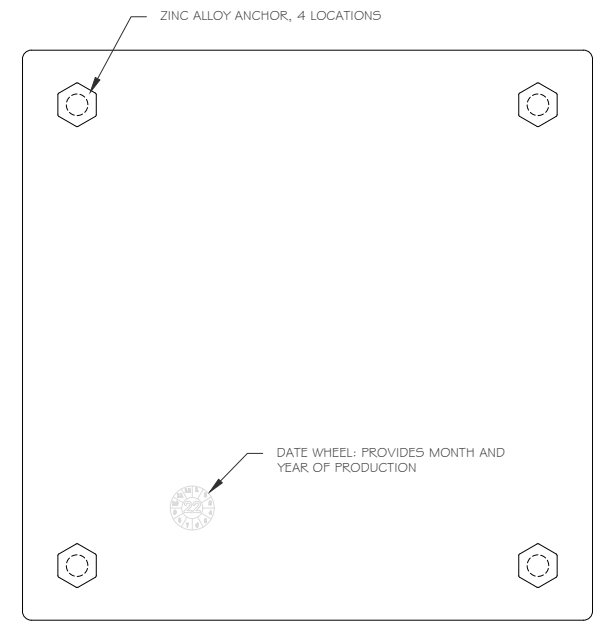
A

AA

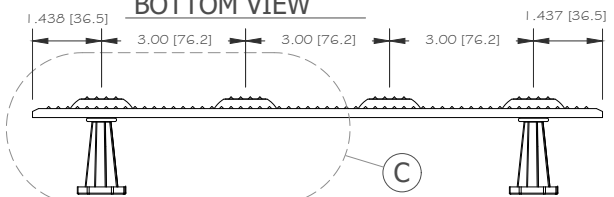


SIDE VIEW

AA

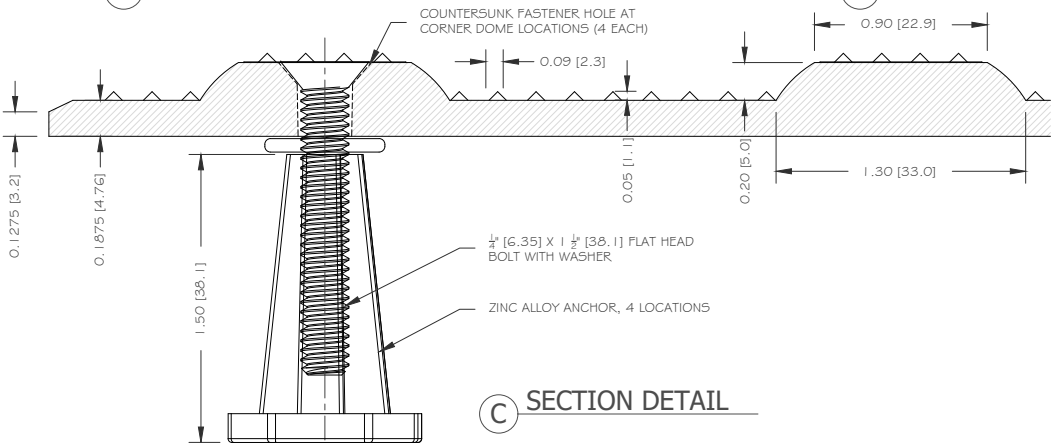


BOTTOM VIEW



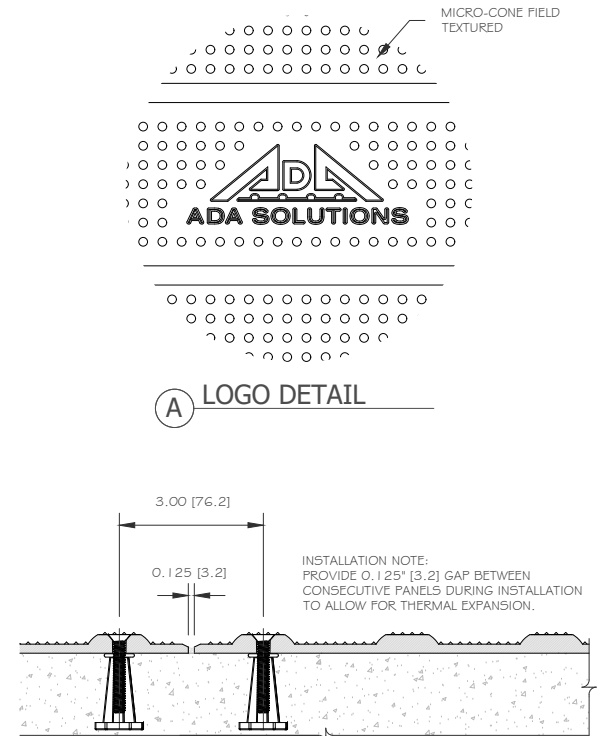
END VIEW

BB



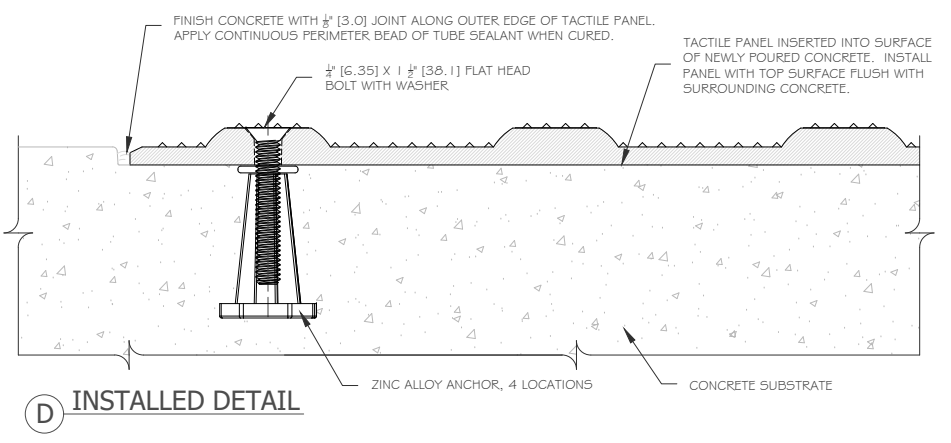
SECTION DETAIL

C



INSTALLATION IN SERIES

B



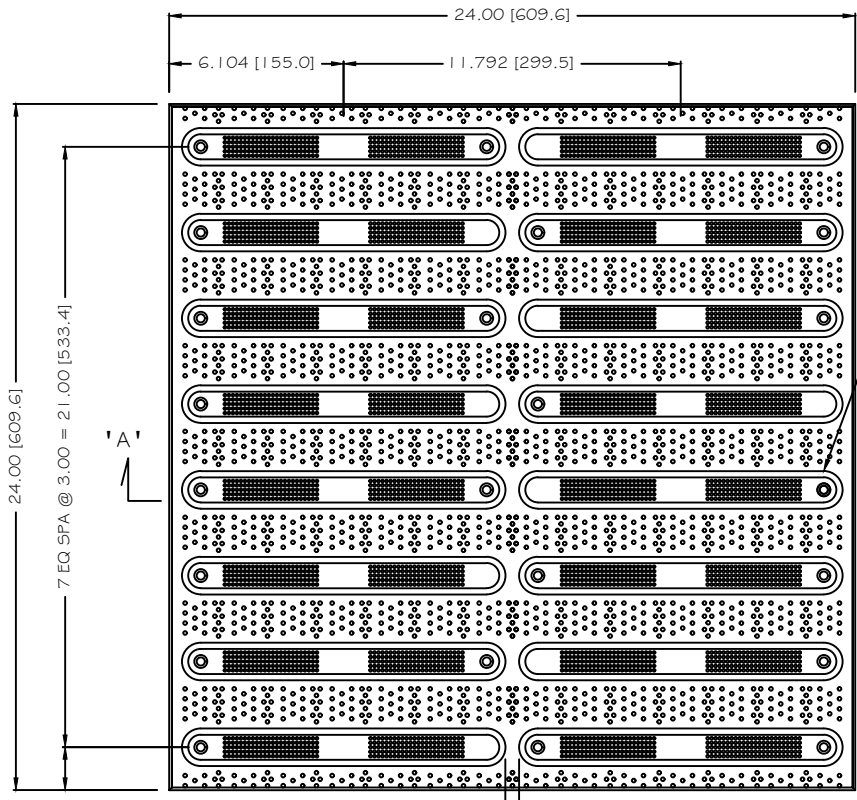
INSTALLED DETAIL

D

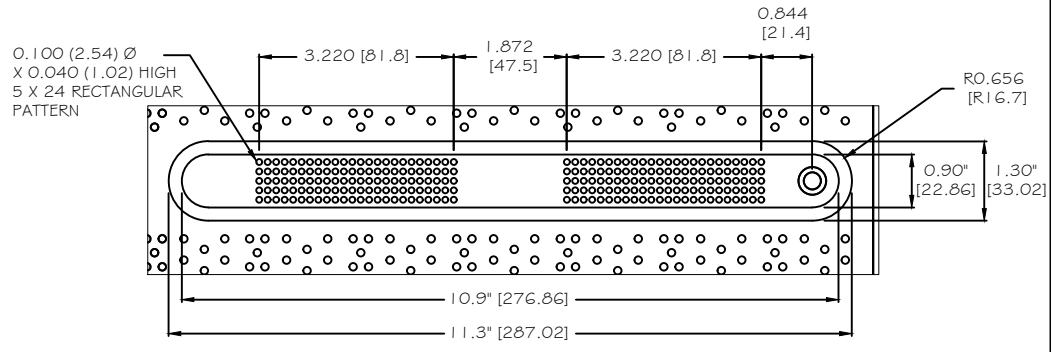
DIRECTIONAL WAYFINDING PANEL
12" x 12" Cast-In-Place Directional Guide Tile
 PART SIZE: 11.875" (301.62 MM) X 11.875" (301.62 MM)
 3.00" (76.2 MM) DIRECTIONAL BAR SPACING

DIVISION TACTILE WALKING SURFACE INDICATORS		WEBSITE ADATILE.COM
MATERIAL FIBERGLASS REINFORCED POLYMER COMPOSITE SMC		PHONE 1-800-372-0519
DRAWING NUMBER ADA-BAR1212 Cast In Place	DATE 2022-06-10	DRAWING UNITS INCHES [MM]
		EMAIL INFO@ADATILE.COM

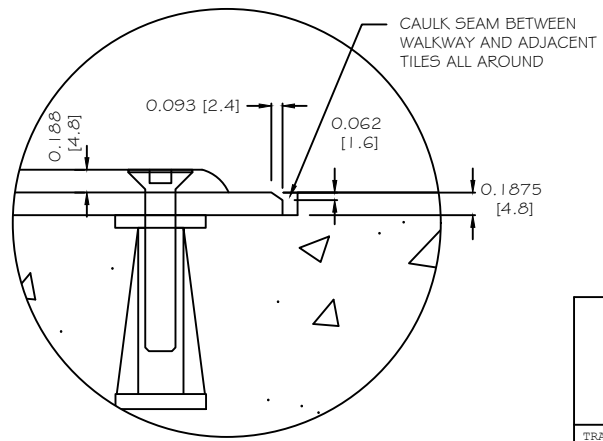




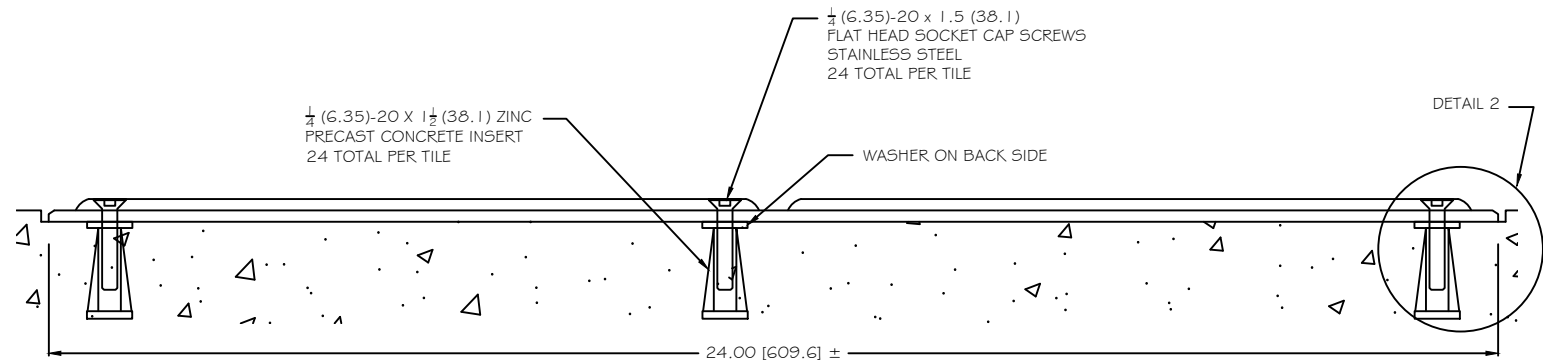
DIRECTIONAL BAR TILE PLAN




DETAIL 1



DETAIL 2



SECTION A

ALL DIMENSIONS NOMINAL PRIMARY DIMENSION INCHES mm IN PARENTHESES	
TRADE WAYFINDING TILE	PART NO. BARTILERE2424
MATERIAL SMC COMPOSITE	
PROJECT REP DIRECTIONAL BAR TILE PART SIZE: 24" x 24" (610mm x 610mm) 24-BOLT LOCATIONS 0.1875 (4.8) BODY THICKNESS PLANS AND DETAILS	
DRAWING NO. ADA-DGTREP_2424	DATE 2020-08-11
 WWW.ADATILE.COM PHONE: (800) 372-0519 EMAIL: ADA-Info@SureWerx.com	



SECTION 32 17 26 – TACTILE WAYFINDING

DIRECTIONAL BAR TILE CAST-IN-PLACE REPLACEABLE

SECTION 1 – GENERAL

1.1 DESCRIPTION

- A. This Section includes Specifications for furnishing and installing embedded Cast-In-Place Replaceable Directional Bar Tile embedded in concrete for locations shown on the Drawings, in accordance with the Contract Documents and as directed by the Engineer.

1.2 RELATED DOCUMENTS

- A. Drawings and general provisions of Contract, including General and Special Conditions and Division 1 Specifications Section, apply to this Section.
- B. Department of Justice ADA Standards (2010)
- C. Department of Transportation ADA Standards for Transportation Facilities (2006)
- D. Proposed Guidelines for Accessible Public Rights-of-Way (2023)
- E. California Title 24
- F. ISO 23599:2019-01 – Assistive products for blind and vision-impaired persons — Tactile walking surface indicators
- G. ISO 21542:2011 – Building Construction – Accessibility and Usability of the Built Environment
- H. ISO 9001 – Certificate No. 0502011, ISO 1409 and ISO/B 16949 Certified Manufacturing Facility located in Jefferson, Ohio
- I. Accessibility for Ontarians with Disabilities Act - (AODA)
- J. Canadian Standards Association – (CSA)

1.3 SUBMITTALS

- A. Product Data Sheet: Submit ADA Solutions literature describing products, installation procedures and routine maintenance.
- B. Samples for Verification Purposes: Submit two (2) Directional Bar Tile samples. Samples shall be properly labeled and shall contain the following information: Name of Project, Submitted By, Date of Submittal, and Manufacturer's Name.

- C. Shop Drawings: Submit the Standard Manufacturer Shop Drawings showing all pertinent characteristics of the Cast-In-Place Replaceable Directional Bar Tile including profile, tile surface profile, plans of tile placement including joints, and material to be used as well as outlining installation materials and procedures.
- D. Material Test Reports: Submit all completed current test results from qualified, accredited independent testing laboratories by ASTM and UL/Canada guidelines and indicating that materials proposed for use follow specification requirements and meet or exceed the properties indicated on these specifications.
- E. Maintenance Instructions: Submit copies of the manufacturer’s specified installation and maintenance practices for each type of Directional Bar Tile and accessories as required.

1.4 QUALITY ASSURANCE

- A. Provide Cast-In-Place Replaceable Directional Bar Tile and accessories as produced by a single manufacturer with a minimum of five years of experience in manufacturing Detectable Warning Surface products.
- B. Installer’s Qualifications: Engage an experienced installer certified in writing by Cast-In-Place Replaceable Directional Bar Tile manufacturer as qualified for installation, who has completed installations similar in material, design, and extent to that indicated for the Contract.
- C. Directional Bar Tile must be compliant with ADAAG, PROWAG, and California Title 24 requirements.
- D. Directional Bar Tile shall meet or exceed the following test criteria using the most current test methods:

Standard	Standard Description	Value
ASTM D695	Compressive Strength	28,900 psi minimum
ASTM D790	Flexural Strength	21,000 psi minimum
ASTM D 638	Tensile Strength	11,000 psi minimum
ASTM C 1028	Standard Test Method for Determining the Static Coefficient of Friction (Slip Resistance)	1.18 Dry / 1.05 Wet
AS HB198:2014 (AS/NZS 4586)	Pendulum Sustainable Slip Resistance (SSR)	Pendulum Test Value (PTV), with Four S (96) hard rubber slider: 56 Dry / 44 Wet; After 500 cycles of abrasion: 34 Wet
ASTM C501	Abrasion Resistance	Minimum 500
FM 5-594	Abrasion Resistance, Florida Method	Average Volume Loss: no more than 0.03 cm ³
NTPEP TP103 (2015)	High Temperature Thermal Cycling Exposure, (Sect 14) and Resistance to Impact from Falling Tup (Sect 10)	Min. 60 thermal cycles at 200°F (93.33°C) = maximum damage classification of ‘C’ at 20 ft-lb impact
ASTM G155	Accelerated Weathering	ΔE<5.0 at 2,000 hours min.
ASTM D570	Water Absorption	0.07%
ASTM C1026	Freeze/Thaw/Heat	No deterioration
ASTM D1037	Freeze/Thaw	No deterioration
ASTM D543	Chemical Stain Resistance	No reaction
ASTM D1308	Chemical Stain Resistance	No reaction
ASTM-B117	Salt and Spray	No change after 200 hours
ASTM E84	Flame Spread Index	20
AASHTO H20	Load Bearing Test	No Damage at 16,000 lbs.

E. Stamped concrete, polymer concrete, concrete pavers/tile, or brick products are not acceptable for use on this project.

1.5 DELIVERY, STORAGE AND HANDLING

- A. Directional Bar Tile shall be suitably packaged or crated to prevent damage in shipment and handling. Finished surfaces shall be protected by sturdy plastic wrappings to protect the tile from concrete residue during installation.
- B. Directional Bar Tile shall be delivered to a location at the building site for storage before installation. Store tiles in an area that is within an acceptable temperature range 40°F - 90°F (4°C - 32°C) and maintain the storage facility in a clean, dry condition to prevent contamination or damage to the tiles.

1.6 SITE CONDITIONS

- A. Environmental Conditions and Protection: Maintain a minimum temperature of 40°F (4°C) in spaces to receive Directional Bar Tile for at least 24 hours before installation, during installation, and for not less than 24 hours after installation.
- B. The use of water for work, cleaning, or dust control, etc. shall be contained and controlled and shall not be allowed to come in to contact with the general public. Provide barricades or screens to protect pedestrians.

1.7 MANUFACTURER'S WARRANTY

- A. Cast-In-Place Replaceable Directional Bar Tile shall be guaranteed in writing for a period of seven (7) years from date of Contract's final completion. The guarantee includes manufacturing defects, breakage, and deformation.

1.8 INSTALLATION WARRANTY

- A. Cast-In-Place Replaceable Directional Bar Tile installation shall be warranted in writing for two (2) years by the installer. Products must be guaranteed from defective work and loosening of tiles.

SECTION 2 – PRODUCTS

2.1 MANUFACTURERS

- A. Cast-In-Place Replaceable Directional Bar Tile by ADA Solutions, 149 South Cucumber Street, Jefferson, OH 44047. Toll-Free: 800-372-0519, sales@adatile.com, www.adatile.com.
- B. Tile Sizes
 - a. 24" x 24" (609.6 x 609.6 mm), 2 rows of 8 bars
 - b. 12" x 12" (304.8 x 304.8 mm), 1 row of 4 bars
 - c. 6" x 48" (152.4 x 1219.2 mm), 4 rows of 2 bars
- C. Existing engineered and field-tested products, which have been in successful service for five (5) years are subject to specification compliance, may be incorporated in the project and shall meet or exceed the specified test criteria and characteristics. Requests for Approved Equal status must be submitted and approved by the Owner before the Tender Phase of the project.

2.2 MATERIALS

- A. Composition: Cast-In-Place Replaceable Directional Bar Tile shall be manufactured using a matte finish exterior grade homogeneous (uniform color throughout thickness of product) glass and carbon reinforced polyester based Sheet Molding Compound (SMC) composite material. Raised directional bars must contain fiberglass reinforcement within the bars for superior structural integrity and impact resistance. A matte finish will be required on the Tactile Surface for superior slip resistance performance superior to that offered by a gloss finish. Use of Tactile Surface Products employing coatings or featuring layers of material with differing composition, performance, or color properties is expressly prohibited under this Section.
- B. Color: Color shall be single, homogeneous color throughout tile
 - 1. Federal Yellow (Y), Federal Standard Color No. 33538
 - 2. Brick Red (R), Federal Standard Color No. 20109
 - 3. Clay Red (CR) Federal Standard Color No. 22144
 - 4. Safety Red (SR) Federal Standard No. 31350
 - 5. Black (B) Federal Standard Color No. 37038
 - 6. Dark Gray (G) Federal Standard Color No. 36081
 - 7. Safety Blue (B) Federal Standard Color No. 15187
 - 8. White (W) Federal Standard Color No 27925
 - 9. Seattle Yellow (SY) Federal Standard Color No. 23594
- C. Directional Bars: Raised directional bars of 0.20" (5.0 mm) nominal height, 11.0" (279.4 mm) minimum length, base width of 1.3" (33 mm) nominal and top width of 0.90" (22.86 mm) nominal. Spacing between parallel bars shall be 3.0" (76.2 mm) on center.
- D. Cast-In-Place Replaceable Directional Bar Tiles shall feature corrosion resistant concrete anchor inserts minimum 1.5" (38.1 mm) long with 0.25" (6.35 mm) x 1.5" (38.1 mm) long corrosion resistance bolts.

SECTION 3 – EXECUTION

3.1 PREPARATION

During all concrete pouring and Directional Bar Tile installation procedures, ensure adequate safety guidelines are in place and that they are in accordance with the applicable industry and government standards.

The physical characteristics of the concrete shall be consistent with the Contract Specifications while maintaining a slump range of 4 - 7 to permit solid placement of the Cast-In-Place Replaceable Directional Bar Tiles. An overly wet mix will cause the tiles to float. Under these conditions, suitable weights such as 2 concrete blocks or sandbags (25 pounds) may be placed on each tile.

- A. The concrete shall be poured and finished, true and smooth to the required dimensions and slope prior to tile placement.

3.2 EQUIPMENT

- A. Contractor shall provide all tools, equipment, and services required for satisfactory installation per manufacturer's instruction as Incidental Work. Equipment which may be required include typical mason's tools, a 4-foot level with electronic slope readout, 25 lb. (11.4 kg) weights, vibrator, rubber mallet with 2" x 4" x 10" (51 mm x 102 mm x 254 mm) wood tamping plate, and a device for cutting the Directional Bar Tile.

3.3 INSTALLATION

- A. Contractor will not be allowed to install Cast-In-Place Replaceable Directional Bar Tiles until all submittals have been reviewed and approved by the Engineer. Tiles shall be installed per manufacturer's instructions.
- B. To the maximum extent possible, the Directional Bar Tiles shall be oriented in a straight, aligned row at locations indicated on design drawings. Alignment between successive tiles should be within 0.125" (3.17 mm).
- C. Cast-In-Place Replaceable Directional Bar Tiles shall be tamped or vibrated into the fresh concrete to ensure that there are no voids or air pockets, and the field level of the tile is flush to the adjacent concrete surface or as the Drawings indicate to permit proper water drainage and eliminate tripping hazards between adjacent finishes.
- D. Cutting and Setting of tiles shall be cut into size and configuration indicated on the Drawings using a 60 tooth carbide blade on a table saw or equivalent cutting device. For specific instructions for cutting and setting refer to Detectable Warning Surface manufacturer's written instructions.
- E. For installation with continuous runs of multiple tiles, allow 1/8" (3.17 mm) separation between successive tiles to for expansion/contraction.

3.4 CLEANING AND PROTECTING

- A. Protect Cast-In-Place Replaceable Directional Bar Tiles against damage during construction period to comply with tile manufacturer's Specifications.
- B. During and after the tile installation and the concrete curing stage, it is imperative that there are no walking, leaning or external forces placed on the tile to rock the tile, causing a void between the underside of the tile and the concrete.
- C. Remove Protective Plastic Sheeting from tile within 24 hours of installation of the tile. Particularly under hot weather conditions (80 degrees or higher), plastic sheeting will adhere strongly (resulting in difficult removal of same) to tile when not removed quickly.
- D. If requested by the Project Manager, clean tiles not more than four (4) days prior to date scheduled for inspection intended to establish date of substantial completion in each area of project. Clean tile by method specified by tile manufacturer.

END OF SECTION



7 Year Product Warranty

Tactile Walking Surface Indicators Fiberglass Reinforced Polymer Composite

ADA SOLUTIONS warrants to the Project Owner and Project Purchaser that the Tactile Walking Surface Indicators (TWSI) product supplied by ADA Solutions is free from defects in workmanship and material including deformation, discoloration, severe fading, and breakage for a period of Seven (7) Years from the date of acceptance of the Project. The warranty is valid only upon completion of the installation, proper maintenance of the TWSI product, and payment in full to ADA Solutions. Warranty becomes effective 24 hours after the date of installation

EXCLUSIVE REMEDIES: ADA Solutions, at its cost, will repair or replace any defective material promptly reported during the warranty period to ADA Solutions. This warranty includes labor costs and the cost of removal of the TWSI product(s). Repair or replacements will be done on site.

All TWSI products manufactured by ADA Solutions are hereby warranted to comply fully with all applicable American with Disabilities Act of 1992 and the Public Rights of Way Accessibility Guidelines (PROWAG), and California Title 24.

WARRANTY LIMITATIONS: ADA Solutions warranty does not apply to conditions resulting from improper use, improper installation, external causes, acts of God, intentional misuse or abuse, neglected or improper annual maintenance, vandalism, modifications to the TWSI product, with the exception of the Owner's right to immediately eliminate an unsafe condition.

DISCLAIMER OF WARRANTY: The above warranty is the Owner's and Purchaser's exclusive warranty. No other warranty expressed or implied shall apply. ADA Solutions specifically makes no warranty of merchantability and/or fitness for a particular purpose. (In no event will ADA Solutions be liable for any damages, lost profit, consequential or economic damages).

Issued Date: **01/01/2023**

Issued to: **Concrete Company
124 Main Street
Salt Lake City, UT 84111**

Project: **Washington School
Salt Lake City, UT 84119**

Owner: **Washington School District
Salt Lake City, UT 84111**

Manufacturer: **ADA SOLUTIONS, a Division of SureWerx USA, Inc.**

Product: **Cast-In-Place Paver Detectable Warning Panels, Brick Red**

Description: **Fiberglass reinforced polymer composite material, UV stable with homogeneous color**

Issued by:

John Stieby

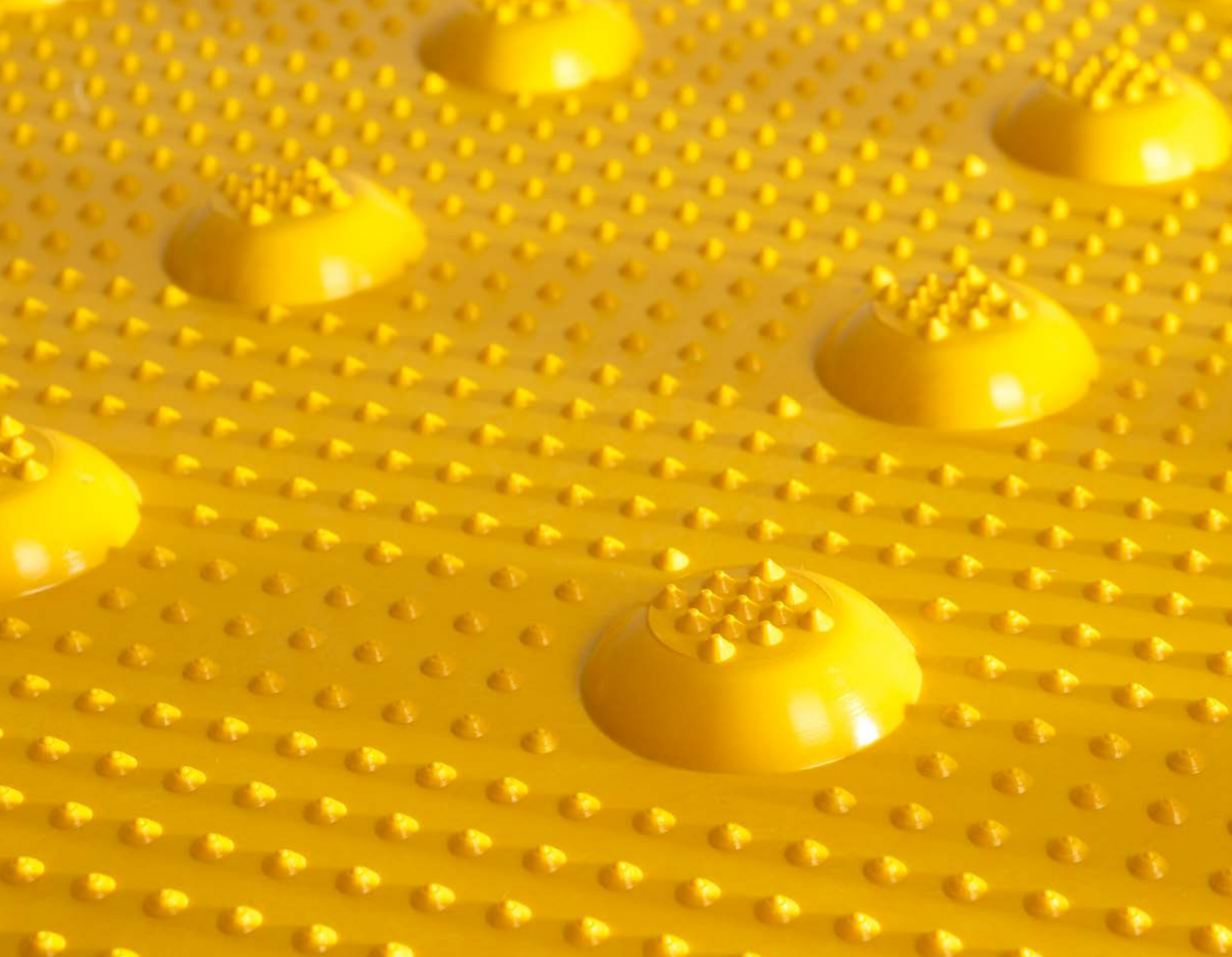
Name

Director of Business Development

Title

01/01/2023

Date



Wherever you go...
There we are[®]



ADA Office
800.372.0519

323 Andover Street, Suite 3
Wilmington, MA 01887



www.adatile.com
www.surewerx.com