

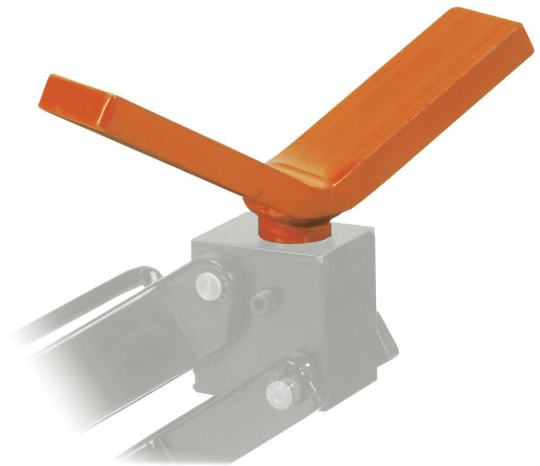
DRIVE SHAFT ADAPTOR

Product # 030503 | Model # 802A-02

STRONGARM



- Converting adapter for swivel head clutch jack (030501) •
Supports heavy truck drive shafts under the main carrier bearing or the complete shaft, allowing one shop technician to safely move or align them
- Shipping weight: 18 lb (8 kg)



TECHNICAL SPECIFICATIONS

| | |
|--------------------|-------------------------|
| Product Dimensions | 10.50" x 16.50" x 6.00" |
| Product Weight | 11 lb (5 kg) |
| Shipping Weight | 18 lb (8 kg) |