

# Operation MANUAL

## Torque Wrench - Super Heavy Duty



### Dear Customer

You have purchased a professional quality JET JSHD Series micrometer torque wrench. It is a robust precision instrument with a release accuracy of  $\pm 4\%$  of the torque setting. This wrench can be used to apply torque in the counter-clockwise direction by removing the drive plug and reversing it so that it protrudes from the scale side of the head. Properly used and maintained, it will give you many years of trouble free service.

*PLEASE NOTE: EVERY INSTRUMENT IS ONLY AS GOOD AS THE USER. PLEASE READ AND CAREFULLY OBSERVE THE FOLLOWING OPERATING INSTRUCTIONS.*

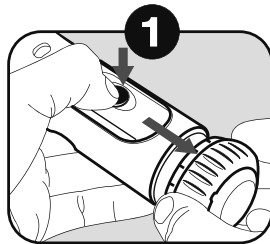
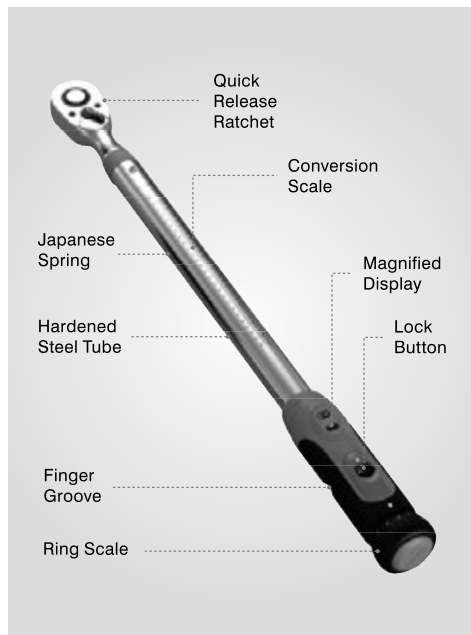
### Safety

Read operation manual completely before using torque wrench. Keep manual for future reference. Wear safety goggles.



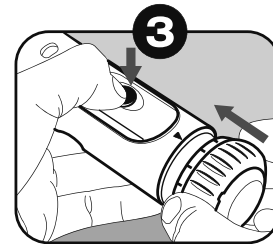
1. Periodic re-calibration is necessary to maintain accuracy.
2. An out of calibration torque wrench can cause part or tool breakage.
3. Do not exceed rated torque. Over-torquing can cause wrench or part to fail.
4. Do not use torque wrench to break fasteners loose.
5. Do not use cheater extension on handle.
6. Do not set the wrench above or below the scale limit.
7. Return wrench to its lowest setting after use. Window will display "Stop" at lowest setting.
8. Ratchet mechanism may slip or break if dirty, mismatched, or worn parts are used, or if direction lever is not fully engaged.

### Adjustment of Torque Setting



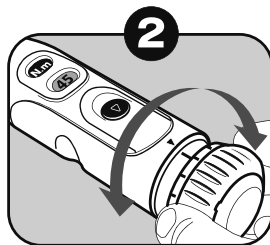
Press the lock button and pull out ring scale at the same time.

NOTE:  
Incorrect operation may cause damage to lock function.



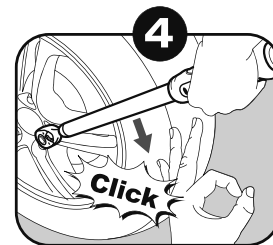
Press the lock button and push in ring scale at the same time.

NOTE:  
Conversion scale is on the tube. (n-m & lb.ft)



Rotate the ring scale to adjust the digit on the display.

NOTE:  
Do not turn the adjusting knob either below the lowest scale reading or above the highest scale reading.



Place middle finger in handle groove. Pull slowly and smoothly until wrench clicks.

NOTE:  
At low torque settings the release is gentle and there usually is no audible "click" signal, learn how the release feels before you torque to avoid accidental overtightening or damage.

### Maintenance

1. The internal mechanism is permanently lubricated at the factory during assembly. Do not attempt to lubricate the internal mechanism.
2. Clean torque wrench using dry materials only. Do not immerse in any liquid.
3. Store torque wrench in its protective case at the lowest setting to relieve pressure on the compressive spring.
4. Accuracy should be checked twice annually using suitable test equipment. Reduce interval if wrench is in continuous use.