



AMERICAN FORGE & FOUNDRY

MODEL: 571B

1,000-lb Engine Stand

Owner's Manual



WARNING:

IMPORTANT: READ THESE INSTRUCTIONS AND ALL WARNINGS PRIOR TO USING THIS EQUIPMENT. UNDERSTAND ALL OPERATING PROCEDURES, SAFETY WARNINGS AND MAINTENANCE REQUIREMENTS. FAILURE TO DO SO COULD CAUSE AN ACCIDENT RESULTING IN SERIOUS OR FATAL INJURY AND/OR PERSONAL PROPERTY DAMAGE.



GENERAL DESCRIPTION

IMPORTANT: Read these instructions and all warnings prior to using this equipment. Understand all operating procedures, safety warnings and maintenance requirements. Failure to do so could cause an accident resulting in serious or fatal injury and/or personal property damage.

SAFETY INFORMATION

WARNING

- Study, understand and follow all instructions before operating this device
- Do not exceed the rated capacity
- Use only on a flat, level surface capable of supporting the weight of the stand and engine
- Lock mounting plate rotating mechanism before applying the load
- Ensure load is centered and secured to the mounting attachments
- Hold handle while removing the pin
- Wear ANSI-approved safety glasses and heavy-duty work gloves during use
- Do not use for aircraft purposes
- Inspect before each use; do not use if parts are loose or damaged
- Do not allow children to play with or near this item
- Only use as intended
- Maintain product labels and nameplates



ASSEMBLY INSTRUCTIONS

Minor assembly of this unit is required.

⚠ WARNING

Read the **ENTIRE IMPORTANT SAFETY INFORMATION** section at the beginning of this document, including all text under subheadings therein, before set-up or use of this product.

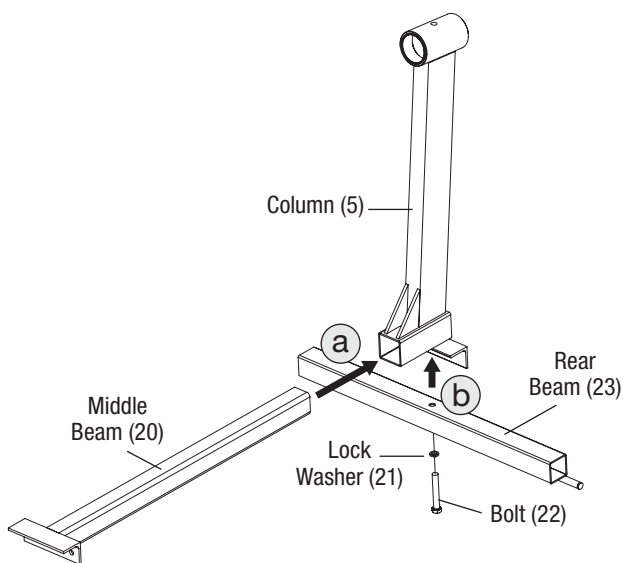


FIGURE A: ATTACHING COLUMN TO REAR AND MIDDLE BEAMS

1. To attach the Column to the Rear and Middle Beams:
 - a. Insert Middle Beam (20) into the receiver at the bottom of the Column (5).
 - b. Place the Rear Beam (23) against the Column. Align the holes in all three parts and secure with a Bolt (22) and Lock Washer (21).

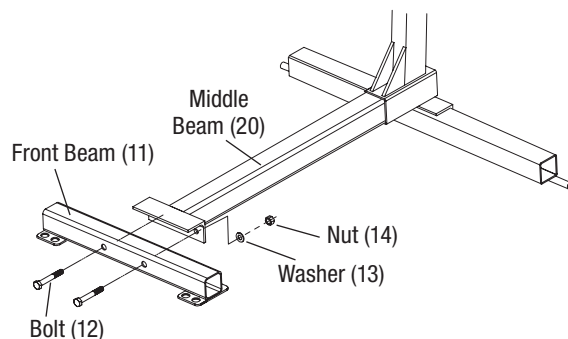


FIGURE B: ATTACH FRONT BEAM

2. Use Bolts (12), Washers (13), and Nuts (14) to attach the Front Beam (11) to the Middle Beam (20), with the brackets on the bottom as shown.

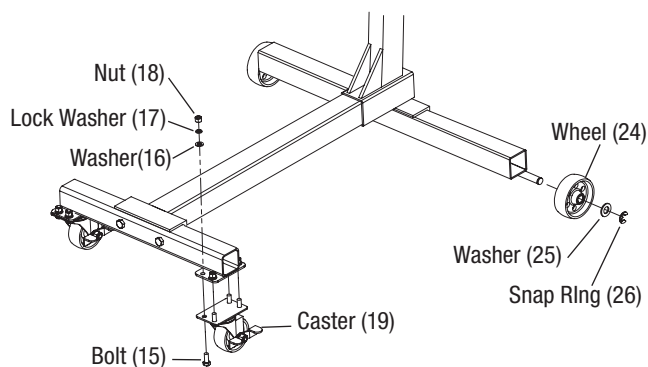


FIGURE C: ATTACH WHEELS AND CASTERS

3. Attach Casters (19) to the Front Beam (11) using Bolts (15), Washers (16), Lock Washers (17), and Nuts (18).
4. Slide a Wheel (24) onto each axle at end of Rear Beam (23). Then slide on a Washer (25) and secure with a Snap Ring (26).



MOUNTING ENGINE

1. Remove the engine from the vehicle using an appropriately rated Engine Crane or lifting device.
2. Remove the bell housing from the engine.
3. Remove or secure any loose engine components.
4. Remove the Mounting head assembly from the Engine Stand and attach it to the engine, following the vehicle or engine manufacturer's guidelines, using Grade 5 bolts, and ensuring the engine center of gravity aligns properly with the mounting head's rotational axis. Tighten bolts.
5. With the engine removed from the vehicle and the Engine Stand Mounting head centered and secured to the engine, align the mounting head assembly with the Engine Stand receiver tube and secure in place using the Locking Pin/Bolt.

⚠ WARNING

If the engine is not centered correctly, the load and handle may rotate in either direction when the locking pin/bolt is removed.

6. Before disconnecting the engine from the Engine Crane or lifting device, ensure the engine is secured firmly to the Engine Stand, and that the Rotational locking pin/bolt is tight and is stable.
7. Insert Handle through Mounting head assembly tube and secure.

ROTATING THE ENGINE

1. While holding onto the handle and the engine to prevent it from accidental rotation, remove the pin.
2. Use assistance to rotate the engine to the desired angle and insert the pin into the top of the column.

REMOVING THE ENGINE

1. Attach an appropriately rated Engine Crane or lifting device to the engine.
2. Slowly raise the engine to relieve the weight from the Engine Stand.

⚠ WARNING

If the engine is not centered correctly, the load and handle may rotate in either direction when the locking pin/bolt is removed.

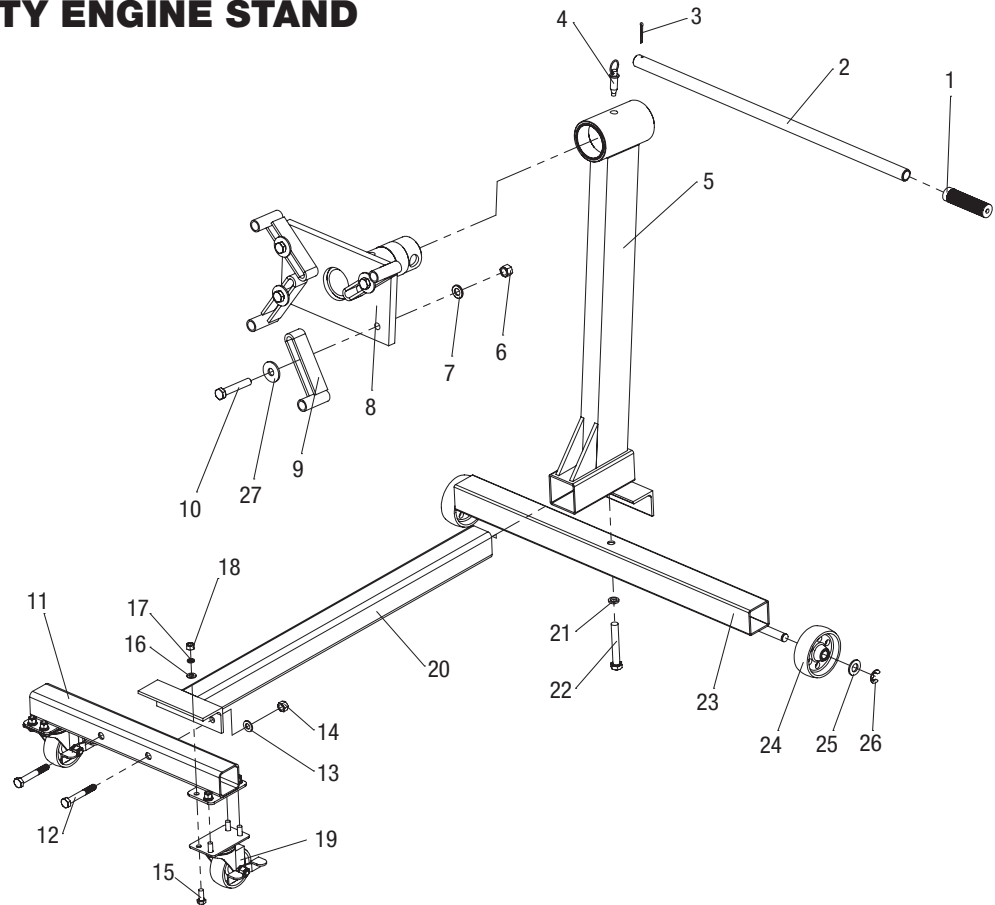
3. Remove the handle from the Mounting head.
4. Remove the Rotational Locking Pin Bolt slowly and carefully.
5. With the load secured to the Engine Crane or lifting device, slowly separate the Mounting head assembly and Engine from the Engine Stand.
6. Remove the Mounting head assembly from the engine.

MAINTENANCE

Store the Engine Stand in a clean and dry environment. Using a general-purpose grease, lubricate wheels, casters, and the mounting head assembly tube.



1000-LB CAPACITY ENGINE STAND MODEL 571B



PARTS LIST

PART ORDER NUMBER	KIT DESCRIPTION	REF. #	KIT INCLUDES
571B-2	HANDLE	1	HANDLE SLEEVE
		2	HANDLE
571B-18	CASTER	19	3" CASTER
571B-23	WHEEL	24	REAR WHEEL
571B-8	HOLDER FINGERS	9	HOLDER FINGERS KIT OF 4
571B-7	PLATE	8	PLATE

PART ORDER NUMBER	KIT DESCRIPTION	REF. #	KIT INCLUDES
571B-HDKT	HARDWARE KIT		HARDWARE KIT
		3	PIN QTY 1
		6	NUT M12 QTY 4
		7	WASHER M12 QTY 4
		10	BOLT M12x45 QTY 4
		12	BOLT M10x70 QTY 2
		27	WASHER QTY 2
		14	NUT M10 QTY 2
		15	BOLT M8x20 QTY 8
		16	WASHER QTY 8
		17	LOCK WASHER QTY 8
		18	NUT M8 QTY 8
		21	LOCK WASHER QTY 1
		22	BOLT M12x80 QTY 1
		25	WASHER QTY 2
		26	SNAP RING QTY 2

* ONLY PARTS WITH A "PART ORDER NUMBER" ARE AVAILABLE FOR SALE.



AMERICAN FORGE & FOUNDRY

LIMITED WARRANTY

SureWerx USA WARRANTS TO ITS CUSTOMERS THAT THE COMPANY'S SureWerx USA AFF-BRANDED PRODUCTS ARE FREE FROM DEFECTS IN WORKMANSHIP AND MATERIALS.

SureWerx USA will repair or replace its **SureWerx USA AFF-branded** products which fail to give satisfactory service due to defective workmanship or materials, based upon the terms and conditions of the following described warranty plans attributed to that specific product. This product carries a ONE-YEAR warranty. During this warranty period, **SureWerx USA** will repair or replace at our option any part or unit which proves to be defective in material or workmanship.

Other important warranty information:

This warranty does not cover damage to equipment or tools arising from alteration, abuse, misuse, damage and does not cover any repairs or replacement made by anyone other than **SureWerx USA**. The foregoing obligation is **SureWerx USA's** sole liability under this or any implied warranty and under no circumstances shall we be liable for any incidental or consequential damages.

Note: Some states do not allow the exclusion or limitation of incidental or consequential damages, so the above limitation or exclusion may not apply to you. If you have any questions about warranty service, please contact **SureWerx USA**. This warranty gives you specific legal rights and you may also have other rights which vary from state to state.



SureWerx, USA Inc.,
325 Corporate Drive, Elgin, IL USA 60123
surewerx.com/usa
affjaxx.com
800-323-7402

571B-INST-1225