

BULLET TO PROTECT



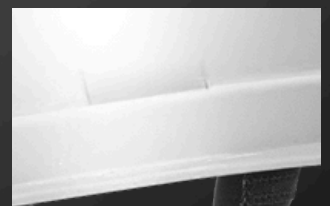
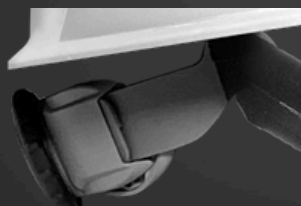
The NEW Jackson SENTRY2 TYPE 2 Safety Helmet delivers all the technology of a modern safety helmet in a traditional cap style. SENTRY2 features the innovative Hard Hat Interchange System, which seamlessly integrates with other Jackson Safety products, providing ultimate versatility to workers without compromising protection.

ENGINEERED TO PROTECT.



THE ALL- NEW

SENTRY2



FEATURES

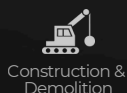
- ABS shell provides added protection from heat and weather.
- EPP liner – protection from side impact, slips, trips and falls.
- 6-point suspension with 370 Speed Dial ratchet and “Quick-Fit” headband.
- Size 6-1/2 to 8-1/2 (52 cm – 68 cm)
- 4-point chin strap with synthetic leather band

STANDARDS

- Non-Vented: Meets and exceeds CSA Z94.1-15 (R2024) Type II, Class E, Meets ANSI/ISEA Z89.1-2014 (R2019) Type II, Class E, HT, LT
- Vented: Meets and exceeds CSA Z94.1-15 (R2024) Type II, Class C, Meets ANSI/ISEA Z89.1-2014 (R2019) Type II, Class C, HT, LT

MODELS

- Vented (Class C) and non-vented (Class E) versions
- With and without high-impact (ANSI Z87.1+) polycarbonate visor



Forestry & Logging



Communication



Power & Utilities



Warehousing & Logistics



Industrial & Manufacturing



Transportation

THE ALL-NEW

CAP-STYLE SAFETY

INTRODUCING



ABS SHELL

Tough and lightweight in both extreme heat and freezing temperatures



CAP-STYLE SAFETY

Classic look and feel with modern Type 2 protection—compact, balanced, and built for everyday jobsite performance



EPP LINER

Protection from side impact, slips, trips and falls

6-POINT COMFORT PLUS AIR-COOLED SUSPENSION

Designed for enhanced airflow, reducing heat buildup and keeping you cool and comfortable



QUICK-FIT HEADBAND

6-point suspension with 370 Speed Dial ratchet and "Quick-Fit" headband



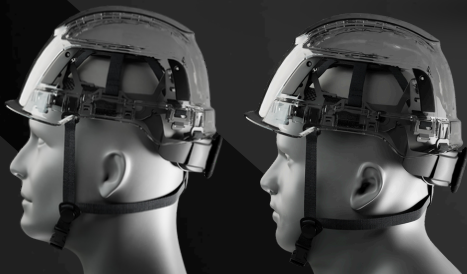
4-POINT CHIN STRAP

with synthetic leather band



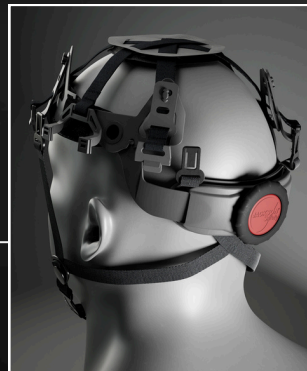
CLASSIC PROFILE PREFERRED BY PROS

Trusted traditional look protects from sun and rain while integrating smoothly with Jackson welding helmets and face shields



FITS EVERY HEAD. PROTECTS EVERY WORKER.

Easy Grip-Easy Turn – 370 Speed Dial ratchet adjusts to the widest range of head sizes 6½ – 8½ (52 cm – 68 cm) ensuring a secure and personalized fit.

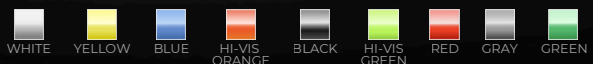


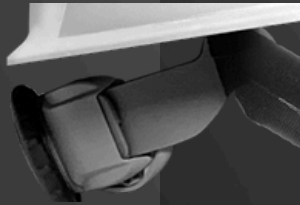
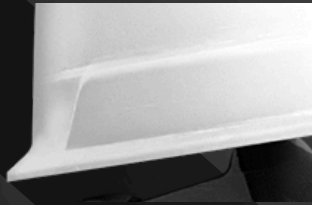
COMFORT IN EVERY CURVE. AIRFLOW IN EVERY MOVE. THE ULTIMATE HEAT STRESS SHIELD.

The 6-Point Comfort Plus Air-Cooled Suspension is engineered for airflow, not just fit. By allowing heat to escape and fresh air to circulate, it fights heat stress better than any helmet in its class—keeping you cool, focused, and ready to work.

JACKSON
SAFETY

COLOURS





FEATURES

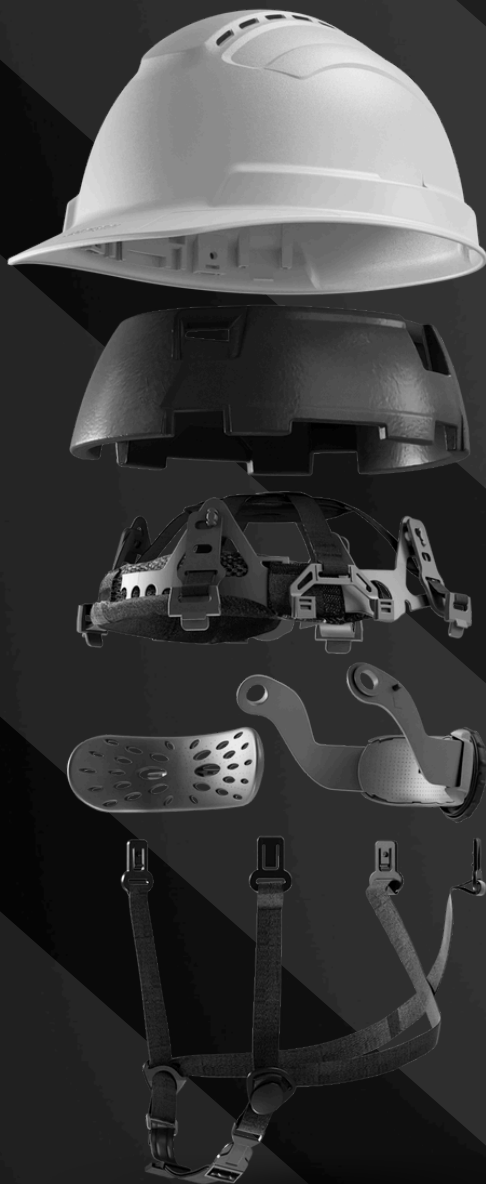
- ABS shell provides added protection from heat and weather.
- EPP liner – protection from side impact, slips, trips and falls.
- 6-point suspension with 370 Speed Dial ratchet and “Quick-Fit” headband.
- Size 6-1/2 to 8-1/2 (52 cm – 68 cm)
- 4-point chin strap with synthetic leather band

STANDARDS

- Non-Vented: Meets and exceeds CSA Z94.1-15 (R2024) Type II, Class E, Meets ANSI/ISEA Z89.1-2014 (R2019) Type II, Class E, HT, LT
- Vented: Meets and exceeds CSA Z94.1-15 (R2024) Type II, Class C, Meets ANSI/ISEA Z89.1-2014 (R2019) Type II, Class C, HT, LT

MODELS

- Vented (Class C) and non-vented (Class E) versions
- With and without high-impact (ANSI Z87.1+) polycarbonate visor



Prod. Number	Venting	Colour
22300	Non-Vented	White
22301	Non-Vented	Yellow
22302	Non-Vented	Blue
22303	Non-Vented	HV Orange
22304	Non-Vented	Black
22306	Non-Vented	HV Green
22307	Non-Vented	Red
22308	Non-Vented	Gray
22309	Non-Vented	Green
22320	Vented	White
22321	Vented	Yellow
22322	Vented	Blue
22323	Vented	HV Orange
22324	Vented	Black
22326	Vented	HV Green
22327	Vented	Red
22328	Vented	Gray
22329	Vented	Green