

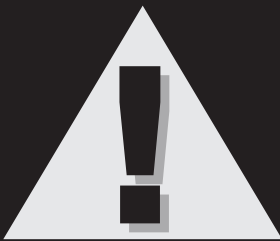


SUPER HEAVY DUTY

**STRONGARM**<sup>®</sup>

PROD NO. 030487  
MOD NO. WDX12

## 1.2 Ton Large Wheel Removal Dolly



### **WARNING:**

Important: Read these instructions and all warnings prior to using this equipment. Understand all operating procedures, safety warnings and maintenance requirements. Failure to do so could cause an accident resulting in serious or fatal personal injury and/or property damage.

M15-SA030487

## TABLE OF CONTENTS

|   |   |                            |    |
|---|---|----------------------------|----|
| 1. GENERAL DESCRIPTION .....              | 2 | 6. MAINTENANCE .....       | 8  |
| 2. SAFETY INSTRUCTIONS .....              | 3 | 7. SAFETY INSPECTION ..... | 8  |
| 3. IMPORTANT RECEIVING INSTRUCTIONS ..... | 3 | 8. TROUBLESHOOTING.....    | 8  |
| 4. ASSEMBLY INSTRUCTIONS .....            | 4 | 9. EXPLODED DRAWING .....  | 9  |
| 5. USAGE INSTRUCTIONS .....               | 7 | 10. PARTS LIST.....        | 11 |



### WARNING!

The use of shop equipment is subject to certain hazards that cannot be prevented by mechanical means, but only by exercise of intelligence, care, and common sense. It is therefore essential to have personnel involved in the use and operation of equipment who are careful, competent, trained, and qualified in the safe operation of this equipment and its proper use when servicing motor vehicles and their components. Examples of hazards are dropping, tipping, or slipping of motor vehicles or their components caused primarily by improperly securing loads, overloading, off-centered loads, use on other than hard level surfaces, and using equipment for a purpose for which it was not designed. No alterations, attachments and/or adapters may be used on this equipment.

The owner and / or operator shall review and understand the product and safety instructions before operating this equipment. Safety information shall be emphasized and understood. If the operator is not fluent in English, the product and safety instructions shall be read to and discussed with the operator in the operator's native language by the purchaser / owner or his designee, making sure that the operator comprehends their contents. **A copy of these instructions / warnings must be retained for future reference.**

## 1. GENERAL DESCRIPTION

This wheel dolly is designed for easy, quick and safe removal, handling and fitting of large wheels - also deep-treaded tractor tires.

### 1.1 Features:

- For removing, transporting, and mounting large off-road tractor / wheeled excavator tires easily – and safely
- 1.2 Ton (2,400 lb / 1,089 kg) max tire weight capacity
- For large wheels from 39" (1m) up to 86" (2.2m) in diameter and up to 31" (.8m) in cross-section width
- Large 6" steel and Polyurethane casters for easy maneuverability
- Double acting hydraulic system for easy and fast operation
- Foot pedal for easy lifting and safe, controlled lowering action
- Adjustable top stabilizing arm for wide range of tire diameters and widths
- 2 sets of 4 large rollers improve handling of tires with deep treads
- Rugged construction for use in both interior and exterior environments
- Fast disassembly for easy transport and/or relocation

### 1.2 Specifications:

| Capacity          | Min Tire Diameter | Max Tire Diameter | Max Tire Cross-sectional Width | Shipping Weight |
|-------------------|-------------------|-------------------|--------------------------------|-----------------|
| 1.2 Ton (2,400lb) | 1,000 mm (39")    | 2,200 mm (86")    | 800 mm (31")                   | 155 KG (342lb)  |

## 2. SAFETY USAGE INSTRUCTIONS

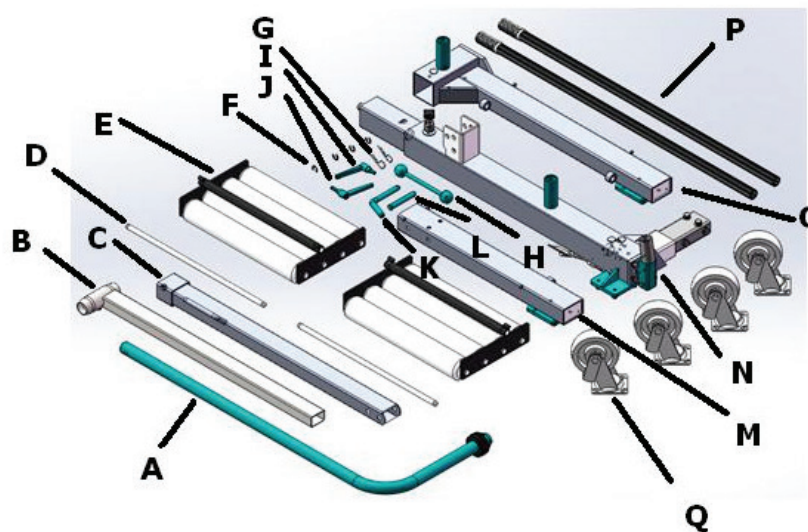
To avoid personal injury or property damage during operation, read and follow all CAUTIONS, WARNINGS, and INSTRUCTIONS, including the warnings for connected products.

- Do not exceed rated capacity of 1.2 ton (2,400 lb)
- The operator should be knowledgeable and experienced before operating this device
- Always support the vehicle with support stands before using the wheel dolly
- Verify that the surface is free of obstacles before lowering, and that there is no risk of pinching between moving parts
- Use only for wheel lifting and removal on a hard level surface
- Always stand and operate the wheel trolley from behind the vertical support (C)
- Do not operate or manoeuvre the wheel from front of the tire support arm (A)
- Rest the wheel as fully on top of the rollers as possible
- Ensure that the load does not tilt while lowering or moving
- Lower the wheel and secure it with the wheel support before transporting
- The wheel dolly must be secured using the locking mechanism before manoeuvring the unit. If this lock is not used, the wheel dolly could open while carrying the load and the wheel could tip out
- No alterations shall be made to this device
- Failure to follow these warnings may result in personal injury

## 3. IMPORTANT RECEIVING INSTRUCTIONS

**Check the parts in the carton.**

Visually inspect all components for any missing parts or damage. Refer to the following picture.



|   |                  |       |
|---|------------------|-------|
| A | Tire Support Arm | 1 PC  |
| B | Extending Tube   | 1 PC  |
| C | Vertical Support | 1 PC  |
| D | Connect Axle     | 2 PCS |
| E | Roller Table     | 2 PCS |
| F | Circlip          | 4 PCS |
| G | Cotter Pin       | 2 PCS |
| H | Handle Rod       | 1 PC  |
| I | Handle A         | 1 PC  |

|   |                          |       |
|---|--------------------------|-------|
| J | Handle B                 | 1 PC  |
| K | Fix Pin A                | 1 PC  |
| L | Fix Pin B                | 1 PC  |
| M | Support Tube             | 1 PC  |
| N | Base Assembly            | 1 PC  |
| O | Adjustable Base Assembly | 1 PC  |
| P | Handle Tube              | 2 PCS |
| Q | Castor                   | 4 PCS |

## 4. ASSEMBLY INSTRUCTIONS

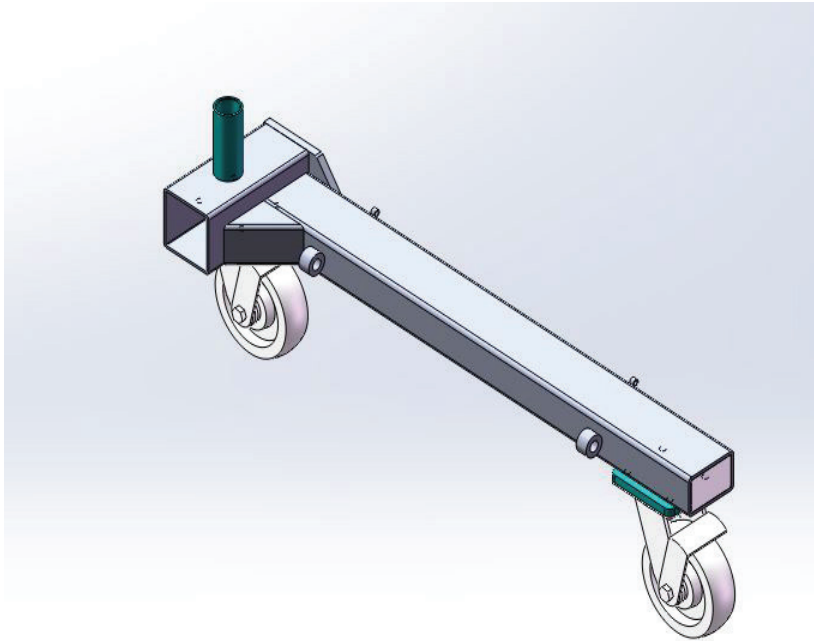
### STEP 1

Take off the bolts, lock washer and flat washer from Base Assembly (N) and connect the caster (Q) with Base Assembly (N).



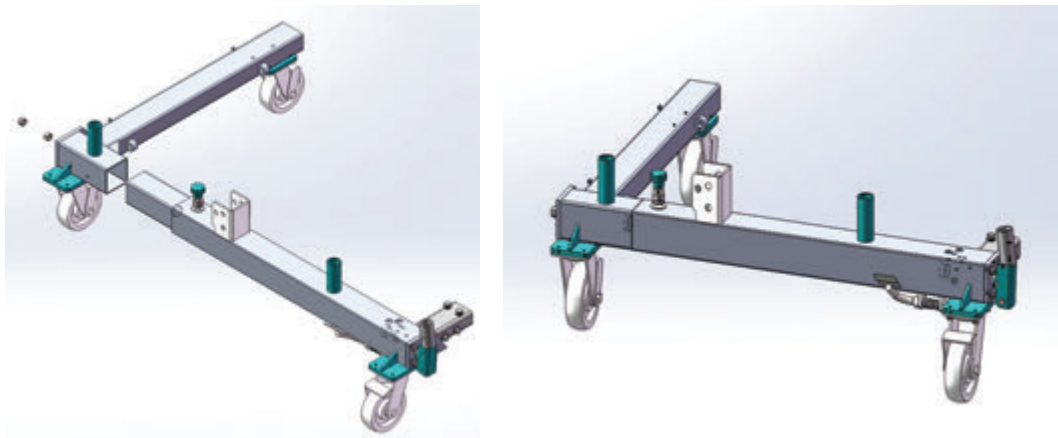
### STEP 2

Take off the bolts, lock washer and flat washer from Adjustable Base Assembly (O) and connect the Caster (Q) with Adjustable Base Assembly (O).



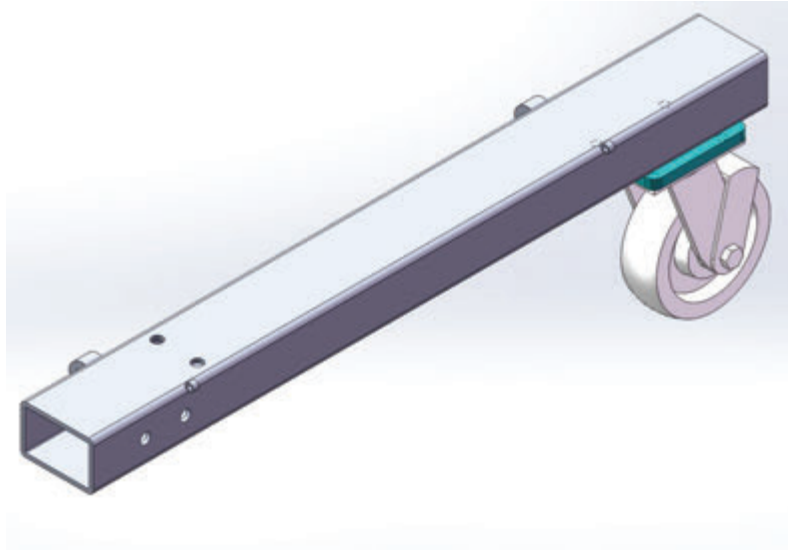
### STEP 3

Take off the M14 bolts on the front of Base Assembly (N), connect Base Assembly (N) with Adjustable Base Assembly (O) and tighten the bolts.



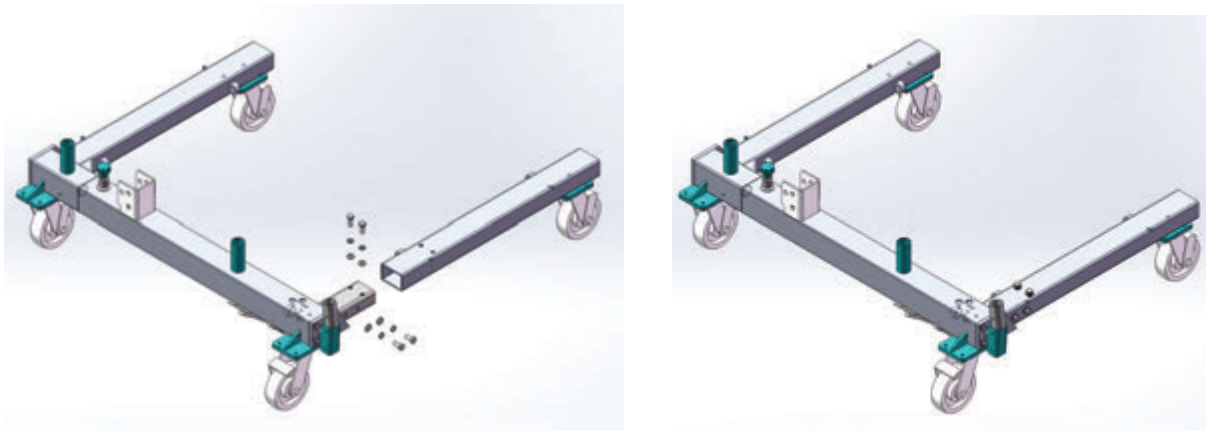
**STEP 4**

Connect the Caster (Q) with Support Tube (M).



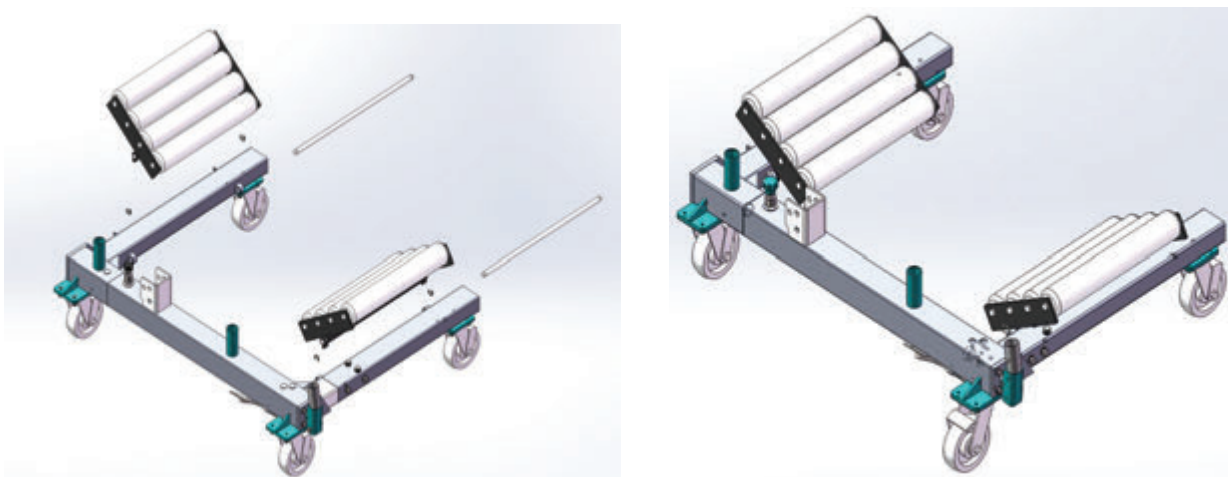
**STEP 5**

Take off the bolts M12, lock washer and flat washer on Base Assembly (N) and connect Base Assembly (N) with Support Tube (M), then tighten the bolts.



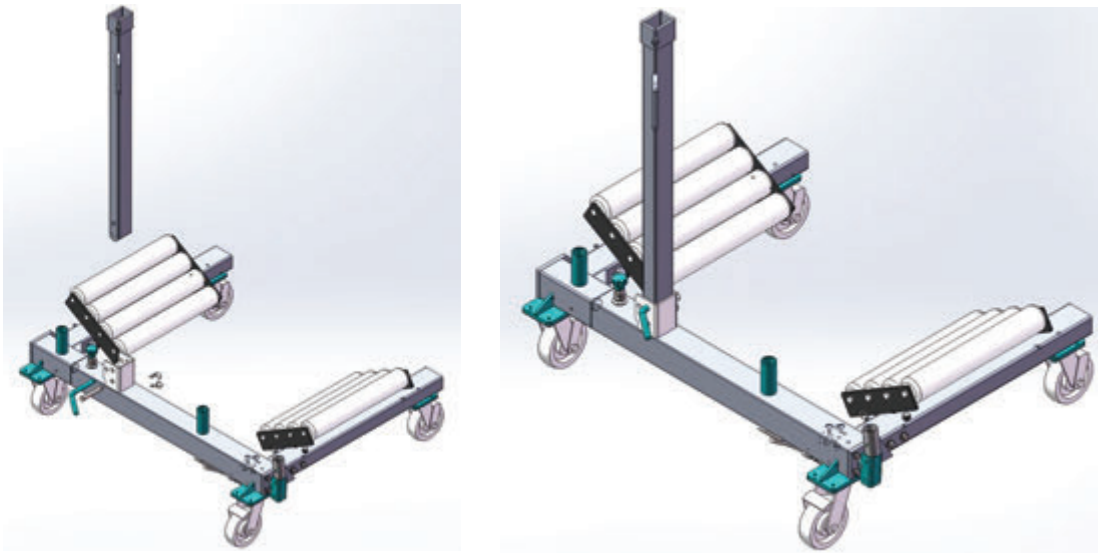
**STEP 6**

As shown in the following figure, align Roller Table (E) with the openings at the inner side of Adjustable Base Assembly (O) and Support Tube (M), insert Connect Axle (D) into the circles and use Circlip (F) to lock. Fix one end of return spring on Roller Table (E) and fix the other end with the circles on Adjustable Base Assembly (O) and Support Tube (M).



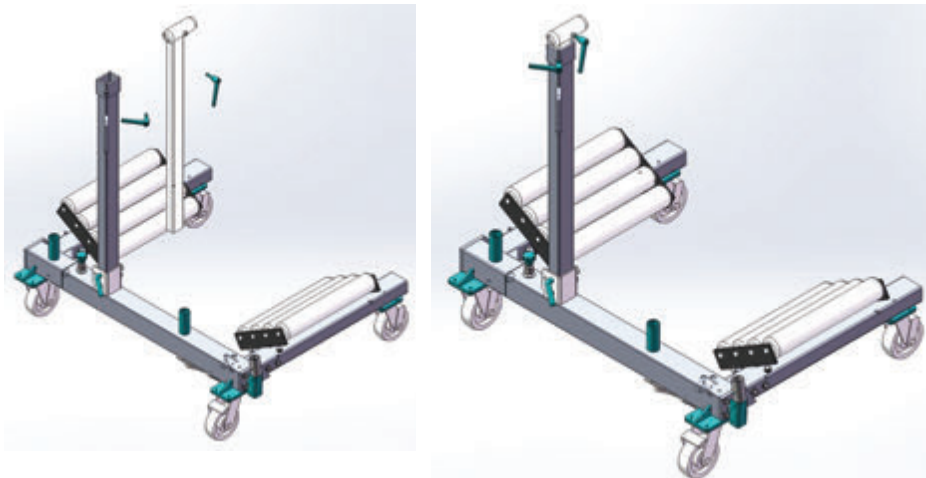
**STEP 7**

As shown in the following picture, connect Vertical Support (C) with Base Assembly (N) by Pin A (K) and Pin B (L) and fix them by Cotter Pin (G).



**STEP 8**

Insert Extending Tube (B) into Vertical Support (C) and insert Handle A (I) into the screw holes on Inner Tube (B) and insert Handle B (J) into the screw holes on Upright Tube (C).



**STEP 9**

Insert Tire Support Arm (A) into Inner Tube (B), take off one ball on Handle Rod (H) and insert Handle Rod (H) into Tire Support Arm (A), assemble the ball to Handle Rod (H) again and insert Handle Tube (P). See the image below.





## 6. MAINTENANCE

Maintenance and repair must always be carried out by trained and qualified personnel.

### Cleaning

High pressure washers, steam jets or degreasing agents are not recommended to avoid degreasing and corrosion. Inspect and grease moving parts regularly as part of normal maintenance.

### Daily

Check the Wheel Dolly for damage.

### Monthly

Lubricate axles and rollers with grease or high-quality oil.

## 7. SAFETY INSPECTION

The wheel dolly must be inspected by annually a qualified and competent inspector. Check frame, rollers and wheel support for fatigue and wear; grease and oil as required. Ensure that all safety labels are legible.

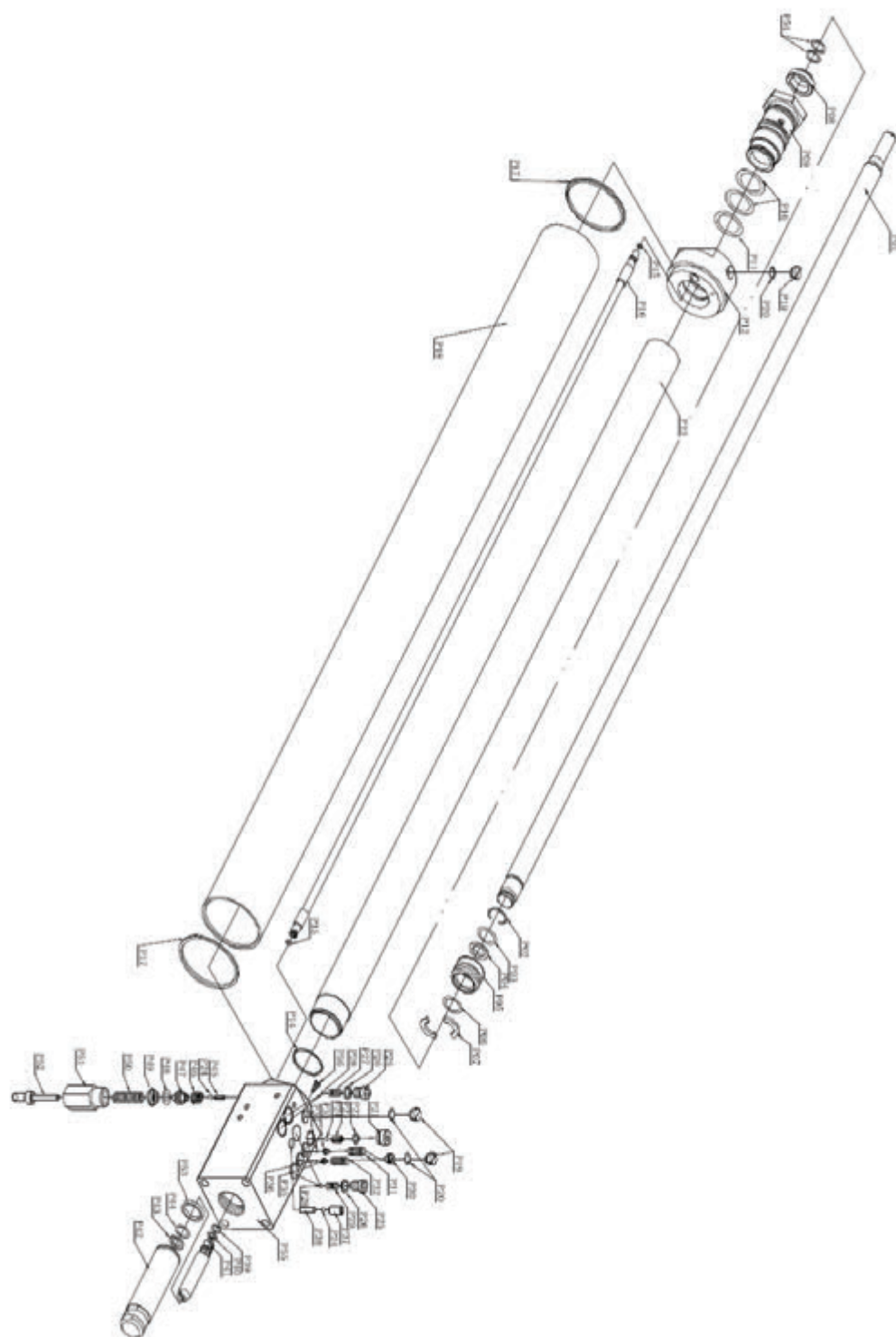
## 8. TROUBLESHOOTING

| Problem   | Cause   | Action  |
|---|---|---|
| Dolly doesn't lift  | 1. Oil shortage<br>2. Inner leaking   | 1.Add oil<br>2.Contact supplier for repair  |
| Dolly lifts slowly  | Air in the pump   | Bleed the air in the pump.<br>Remove the oil filter cap, operate handle (N1) until the oil filling screw (S) is visible, remove it and work the wheel dolly without load until it works normally. |
| Dolly works normally without load but can't lift under load | 1. Load exceeds the rated capacity<br>2. Safety valve is adjusted incorrectly<br>3. Oil is not circulating correctly  | 1.Check the rated capacity<br>2.Contact supplier for adjustment<br>3.Contact supplier for repair  |
| Wheel descends automatically under load                     | Leak in the oil pump  | Contact the supplier to repair  |
| Operating the handles won't spread the dolly                | Under normal operation, 3-5 strokes are required before it starts to spread. If it does not work after pumping 10 strokes, there is a problem with the return valve | Operate Handle (N1) and at the same time release the Foot Pedal (R)   |



## 9. EXPLODED DRAWING (con't)

### Pump



## 10. PARTS LIST

### Complete Machine

| No. | Description              | Qty. | No. | Description     | Qty. |
|-----|--------------------------|------|-----|-----------------|------|
| 1   | Base Assembly            | 1    | 27  | End Cap         | 2    |
| 2   | Adjustable Inner Tube    | 1    | 28  | Screw           | 1    |
| 3   | Adjustable Base Assembly | 1    | 29  | Nut             | 1    |
| 4   | Support Tube             | 1    | 30  | Handle Ball     | 2    |
| 5   | Flat Washer              | 4    | 31  | Handle Rod      | 1    |
| 6   | Lock Washer              | 4    | 32  | Roller          | 8    |
| 7   | Bolt                     | 4    | 33  | Roller Table    | 2    |
| 8   | Caster                   | 4    | 34  | Spring          | 4    |
| 9   | Flat Washer              | 20   | 35  | Connect Axle    | 2    |
| 10  | Lock Washer              | 20   | 36  | Handle Grip     | 2    |
| 11  | Bolt                     | 16   | 37  | Handle Tube     | 2    |
| 12  | Lock Pin                 | 1    | 38  | End Cap         | 3    |
| 13  | Pin                      | 1    | 39  | Nut             | 2    |
| 14  | Spring                   | 1    | 40  | Big Flat Washer | 1    |
| 15  | Base                     | 1    | 41  | Pump Assembly   | 1    |
| 16  | Circlip                  | 1    | 42  | Release Pedal   | 1    |
| 17  | Upright Tube             | 1    | 43  | Circlip         | 4    |
| 18  | Fix Pin A                | 1    | 44  | Spring          | 1    |
| 19  | Fix Pin B                | 1    | 45  | Plate           | 1    |
| 20  | R Pin                    | 2    | 46  | Screw           | 2    |
| 21  | Handle A                 | 1    | 47  | Base For Handle | 1    |
| 22  | Handle B                 | 1    | 48  | Bolt            | 1    |
| 23  | Inner Tube               | 1    | 49  | Nut             | 1    |
| 24  | Clamp Support Arm        | 1    | 50  | Pin             | 1    |
| 25  | Roller Wheel             | 1    | 51  | Bolt            | 4    |
| 26  | Ring                     | 1    |     |                 |      |

## 10. PARTS LIST (con't)

### Pump

| No. | Description      | Qty. | No. | Description         | Qty. |
|-----|------------------|------|-----|---------------------|------|
| P01 | Piston Rod       | 1    | P29 | Spring              | 2    |
| P02 | Ring             | 1    | P30 | Screw               | 2    |
| P03 | O Ring           | 1    | P31 | Spring              | 1    |
| P04 | PTFE Washer      | 1    | P32 | Spring              | 1    |
| P05 | Piston Head      | 1    | P33 | Base For Steel Ball | 1    |
| P06 | O Ring           | 1    | P34 | Steel Ball          | 1    |
| P07 | Ring             | 1    | P35 | Base For Steel Ball | 1    |
| P08 | Dust Ring        | 1    | P36 | Steel Ball          | 1    |
| P09 | Cap1             | 1    | P37 | Screw               | 1    |
| P10 | O Ring           | 2    | P38 | Pin                 | 1    |
| P11 | O Ring           | 1    | P39 | O Ring              | 1    |
| P12 | Cap2             | 1    | P40 | PTFE Washer         | 1    |
| P13 | Ram Tube         | 1    | P41 | Small Pump Core     | 1    |
| P14 | Washer           | 1    | P42 | Big Pump Core       | 1    |
| P15 | O Ring           | 2    | P43 | O Ring              | 1    |
| P16 | Oil Return Lever | 1    | P44 | PTFE Washer         | 1    |
| P17 | Washer           | 2    | P45 | Top Cap             | 1    |
| P18 | External Tube    | 1    | P46 | Spring              | 1    |
| P19 | Screw            | 4    | P47 | Base For Steel Ball | 1    |
| P20 | O Ring           | 4    | P48 | O Ring              | 1    |
| P21 | Screw            | 1    | P49 | Washer              | 1    |
| P22 | Copper Washer    | 1    | P50 | Spring              | 1    |
| P23 | Spring           | 1    | P51 | Nut                 | 1    |
| P24 | Steel Ball       | 3    | P52 | Top Lever           | 1    |
| P25 | Screw            | 4    | P53 | U Ring              | 1    |
| P26 | Copper Washer    | 4    | P54 | O Ring              | 2    |
| P27 | Spring           | 2    | P55 | Pump                | 1    |
| P28 | Steel Ball       | 4    | P56 | Oil Filter          | 1    |