



jacksonsafety.com

800-387-3879 Eastern Canada • 800-472-7685 Western Canada jacksonsafetysales@surewerx.com
847-358-2000 USA orders.usa@surewerx.com • +386 1 477 6784 Europe sales@jacksonsafety.com

JACKSON
SAFETY BRAND

PRECISION LAYOUT AND TOOL GUIDE – LARGE CATALOG

Curv-O-Mark® layout systems have earned a reputation for quality and consistency over a wide range of industries. Easy to use, made to use longer, there are Curv-O-Mark® tools to help bring precision to most any layout task.



Contour Marker

The Curv-O-Mark® Contour Marker is compact, time-saving tool used to lay out pipe and structural steel joints. Laterals at any angle, tees, wyes, crosses, elbows – any type or size of joint can be quickly and precisely laid out. No more complicated mathematical formulas. No more cut and try. No more needless material waste. The Contour Marker can be used to lay out pipe from 1-½" to 18" diameter or structural steel members up to 18". The Contour Marker consists of an X-shaped frame, calibrated protractor, and a triple-jointed marking arm and holder. The holder accepts a soapstone crayon (included) felt pen, or pencil.

The frame easily folds into a compact tool that fits into a pocket or carrying case. It can be used right side up or upside down, depending on the direction of the line to be scribed. The protractor is calibrated on both sides – one in degrees, the other in rise-inches-per-foot - to service any type of measurement needed. The unit comes with a Structural Adapter designed to simplify the layout of structural joints, including I-beams, angles, channels, square tubing and similar shapes. The optional Combination Adapter Accessory allows the Contour Marker to lay out joints on larger size pipe, as well as scribe compound angles with just one setting. The Contour Marker is made from durable, lightweight aluminum. It requires minimal maintenance, only occasional oiling of joints, to provide long service life.



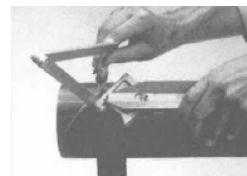
CONTOUR MARKER

0721-0000.....Stock No. 1

Canada:
SureWerx, 49 Schooner St.,
Coquitlam, BC V3K 0B 3
surewerx.com

USA:
SureWerx USA Inc.,
Elgin, IL, USA 60123
surewerx.com/usa

Europe:
Balder d.o.o Teslova ulica 30,
SI-1000 Ljubljana, Slovenia
jacksonsafety.eu



The Contour Marker is easy to use. Layout angles are set with the marker's calibrated protractor and scribed directly onto the pipe using the marking arm. No mathematical equations are required.

Large Contour Marker

A larger version of the Contour Marker, the Large Contour Marker has been developed for use in the layout of large diameter pipe, from 8" to 48". With its Structural Adapter, the JCM can be used in the layout of extremely large structural steel members up to 48" wide.

The JCM comes complete with a durable web strap that helps hold the unit in place during layout. A built in adjustable dial bubble protractor ensures accurate centerline location. A soapstone crayon is included.

Like the standard model, the JCM's capability can be increased with the Combination Adapter Accessory.

A / Une / Una



Brand / Marque / Marca

ENGLISH - LE FRANÇAIS - ITALIANO - ESPAÑOL - DEUTSCH

Combination Adapter Accessory

Designed for use with the Standard and Large Contour Markers, the Adapter simplifies handling and increases layout capacity.

The Adapter permits use of all four sides of the Contour Marker and permits marking on small diameter pipe, over nipples, old welds, or on wrapped pipe. The Adapter can also provide layouts with compound angles using a single setting, or any degree of take off on elbows and turns up to 90°. A built-in protractor provides easy, accurate measurement.



STANDARD COMBINATION ADAPTOR

0721-0001.....Stock No. 2

JUMBO COMBINATION ADAPTOR

0721-0004.....Stock No. 5

JUMBO CONTOUR MARKER

0721-0003.....Stock No. 4

Canada:
SureWex, 49 Schooner St.,
Coquitlam, BC V3K 0B 3
surewerx.com

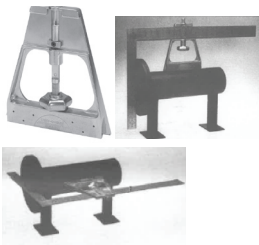
USA:
SureWex USA Inc.,
Elgin, IL, USA 60123
surewerx.com/usa

Flange Aligner Base

Remove the difficulty of flange aligning and squaring with a simple tool that holds a square in the needed position without tying up one's hands.

The Curv-O-Mark® Aligner Base is notched at either end for ease in aligning on the centerline of the pipe and has two 25-pound pull, cast-in magnets for holding either a flat horizontal or vertical position. The Base will accept either leg of a standard or combination square and will work on pipe diameters from 1" on up, requiring only the extension of the legs of the square being used to accommodate larger diameters.

The Flange Aligner Base is made from lightweight durable aluminum. Cast-in magnets hold the flange aligner base in either a flat or vertical position. (Square not included.)



FLANGE ALIGNER BASE

0721-0029.....Stock No. 32

Europe:
Balder d.o.o Teslova ulica 30,
SI-1000 Ljubljana, Slovenia
jacksonsafety.eu

Pipe Flange Aligners

Fast, accurate pipe construction is possible with this self-determining flange aligning tool. The Aligner inserts easily into pipe centers, snugly against the inside pipe diameter and automatically aligns with the pipe axis.

The Pipe Flange Aligner is quickly adjustable for all types of flanges or pipe sizes ranging from 3" to 12" in diameter.



PIPE FLANGE ALIGNER

0721-0009.....Stock No. 10

Circle Ellipse Projector

Perfect circles, ellipses, or oblong circles can now be easily made on any irregular flat or round surface.

The Projector features a protractor with scribing rods and an adjustable lever to lock in the specific layout. A strong, 20-pound pull magnetic base holds the Projector in position during layout. A durable web strap (included) holds the unit secure on non-magnetic surfaces and can be used on either side of the vertical column. The Projector can also be used to lay out lateral intersections of different diameter pipes, or to project circles from 1-½" to 18" in diameter on flat surfaces intersecting at angles from 0 to 70° from vertical. Attachments to develop larger diameter circles are available. The Projector is equipped with a soapstone crayon and also works with chalk, pencil or steel scribe.



CIRCLE ELLIPSE PROJECTOR

0721-0014.....Stock No. 14

Canada:
SureWex, 49 Schooner St.,
Coquitlam, BC V3K 0B 3
surewerx.com

USA:
SureWex USA Inc.,
Elgin, IL, USA 60123
surewerx.com/usa

Centering Heads

Curv-O-Mark® Centering Heads aid in the setting of centerlines, establishing angles, and marks for butt-ins, locating points inside pipes and tanks, laying out keyways and measuring declivity.

The Standard Model (shown below) is used on pipe ½" diameter and larger. It has a 4" Y-type head and is fitted with an adjustable dial bubble protractor (DSL) and is manually operated hardened centering pin.

The Large Centering Head (shown below) is for pipe 1" diameter and up. It has an 8" Y-type head, and a DSL. A spring loaded hardened centering pin eliminates the need for a hammer. Just make the alignment and press the trigger.



Radius Markers

Models are available in four sizes for scribing circles up to 80" diameter. All are a folded type design – the three smaller models will fit conveniently into a pocket. All have sturdy friction joints to maintain rigidity and accuracy, and are made from lightweight, rustproof aluminum for long wear. A soapstone crayon is already installed in each radius marker.



Multi-Trammel Heads

For reliable marking using standard ½" pipe, heads feature radius set points cast in alignment with marking pointers for easy setting. Each is equipped with ¼" screws and squared on the back side for perpendicular alignment. The stationary head holds a ¼" case hardened center point. The moveable head has a 1/8" steel scribe hardened to 59 rockwell.

The chalk holder will accept round, square, or flat soapstone crayon, pencil, or steel point scribe. Marks from 1-½" circle to any diameter needed, depending on

Europe:
Balder d.o.o Teslova ulica 30,
SI-1000 Ljubljana, Slovenia
jacksonsafety.eu

length of pipe used as a trammel bar. Heads are made from durable aluminum. Each set weighs approximately 8 oz. An Allen wrench, soapstone, scribe, and pointer are included.



Multi-Trammel Heads

Allen wrench, soapstone, scribe and pointer are included.

Universal Level

The Curv-0-Mark® Universal Level is a multi-purpose tool. The unit features a 360° adjustable protractor dial bubble (DSL) that ensures accurate leveling and permits the following additional uses:

- Setting a predetermined pitch of a string or pipe
- Setting the angle of laterals to a precise degree
- Trueing vertical runs
- Two-holing flanges

The Level has two cast-in 25 lb magnets (exerting a 50 lb pull) to securely hold the

unit in place on any steel surface, including the underside of a pipe or beam. This permits hands-free leveling, a welcome aid in tight spots. And, since the bubble is mounted on a protractor dial, the Level may be used in any position and still read accurately.

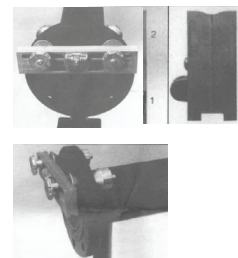
While one face of the Level is magnetic, both faces have deep, cast-in grooves that make the Level self-centering on the contour of the pipe. Because the magnets are cast in, they do not interfere with the use of the Level on nonmagnetic materials, such as aluminum, copper, lumber, stone, or other materials requiring leveling.

For aligning pipe flanges (two-holing), the Level comes with a two-threaded, self-aligning conical spacer and conical nut and bolt units. These are designed to fit any size bolt hole spaced between 2-1/4" to 8" centers on flanges. This permits the orientation of flange bolt holes for any size pipe.

Designed primarily for pipefitting applications, the Universal Level is a valuable tool for any craft required to use a level or a plumb bob.

For structural ironworkers, the powerful holding magnets provide an extra hand. Electricians will find the Level useful in laying out and lining up heavy conduit. With the aid of a handy conversation

chart, carpenters can use the level for the layout of roof rafters.



Two-holing is simplified with the UniversalLevel. Self-aligning spacer bolt units are attached in the two adjacent bolt holes and the top or bottom of the flange. With the DSL dial set at 0 degrees, the flange is rotated until the bubble is centered.

Bolt holes that are offset can be matched by setting the DSL at the desired offset angle prior to rotating the flange.

A built-in adjustable dial bubble protractor (1) ensures accurate centerline location. A cast-in table (2) indicates rise per foot in both inches and meters. A cast-in groove (3) makes the level self-centering on the contour of pipe.

If adjacent top or bottom holes cannot be used, two-holing can be achieved using side bolt holes. In this instance, the DSL dial is set at 90 degrees and the flange is

Canada:
SureWerx, 49 Schooner St.,
Coquitlam, BC V3K 0B 3

surewerx.com

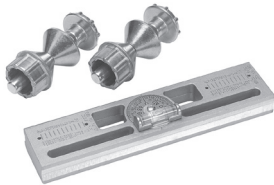
USA:
SureWerx USA Inc.,
Elgin, IL, USA 60123

surewerx.com/usa

Europe:
Balder d.o.o. Teslova ulica 30,
SI-1000 Ljubljana, Slovenia

jacksonsafety.eu

rotated until the bubble is centered.



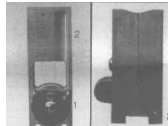
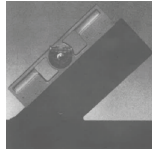
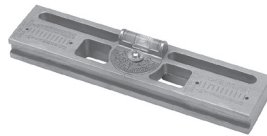
UNIVERSAL LEVEL

0721-0030.....Stock No. 33

Pro Mag Level

A lightweight, easy to use tool for determining angles, the Pro-Mag Level has two cast-in 25 lb pull magnets that hold securely to any steel surface. The unit has a 360° adjustable DSL with two 90° quadrants graduated in 2-½° increments. Also cast in are tables used to convert degree-of-angle to rise-in-inches-per-foot or millimeters-per-meter. A groove on the bottom edge permits use on a small pipe. The Pro-Mag Level is 9" long, 2" high, and ¾" thick. It is made from cast aluminum.

The unit is ideal for pipefitter, welder, jib gilder, or anyone who has to determine angles or do setup work.

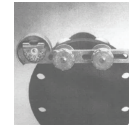
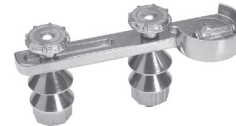


A built-in adjustable dial bubble protector (1) ensures accurate centerline location. A cast-in table (2) indicates rise per foot in both inches and meters. A cast-in groove (3) makes the level self centering on the contour of pipe.

Dual Angle Flange Level

A versatile tool that can be used as a dial degree utility level or, with attachments, for two-holing flange alignment. The unit is made of cast aluminum with a protective housing containing an adjustable DSL. It is also fitted with a threaded, self-aligning conical spacer and a conical nut and bolt units for fastening the Level to a pipe flange. One of the nut and bolt

units is stationary, while the other slides up to 5-½" along a slot in the level to accommodate various flange bolt hole spacings from 2" to 5-½". The body of the tool is ½" thick with a machined surface. The level bubble is protected from weld splatter and breakage with a built-in housing around the DSL.



DIAL-ANGLE-FLANGE LEVEL

0721-0017.....Stock No. 20

Wrap-A-Round

An inexpensive tool for marking straight lines around pipe, or for use as a straight edge. Made out of flexible gasket material with good resistance to heat and cold. All Wrap-A-Rounds are available in two colors. These designate material type and service temperature. GG (Gray) material is used for high

Canada:
SureWerx, 49 Schooner St.,
Coquitlam, BC V3K 0B 3
surewerx.com

USA:
SureWerx USA Inc.,
Elgin, IL, USA 60123
surewerx.com/usa

Europe:
Balder d.o.o Teslova ulica 30,
SI-1000 Ljubljana, Slovenia
jacksonsafety.eu

temperature applications up to 550°F. B (Black) material has a service temperature of up to 350°F. Both material types are asbestos free.



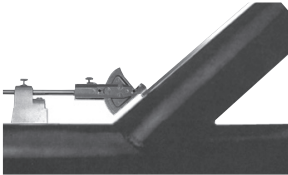
Extra small and special order sizes are unmarked. All other sizes are printed with a scale in inches, pitch chart, tangent chart, and other useful markings. Wrap-A-Rounds in 3.88" and 5.00" feature a metric scale and pitch chart.

			Black (Service temp 350°F)		Gray (Service temp 500°F)	
Size	Width/ Length	Pipe Diameter	New sku#	Old sku#	New sku#	Old sku#
Medium	0.33' x 4'	3" to 6"	14752	3001858	14763	3001867
Large	0.33' x 6'	3" to 10"	14753	3001859	14764	3001868
X-Large	0.42' x 7'	4" to 12"	14754	3001860	14766	3001869
XX-Large	0.42' x 9'	6" to 16"	14756	3001861	14767	3001870

Fitter Welder Protractor

This 90° protractor has a matching locking lever to set and hold the tool at the desired angle. It is equipped with a 5/8" x 10" tapered arm to complete finding of angles or desired bends, or to determine any portions of elbows.

This tool is mounted in a ¾" wide frame with a 3/8" x 6" cast-in rod. It comes with a 25 pound pull magnetic base for holding the protractor frame in position. The unit can be used manually or with a magnetic base, as shown below.



FITTER WELDER PROTRACTOR

0721-0008.....Stock No. 9

Pro-Mag Burning Square

The Curv-0-Mark® Pro-Mag Burning Square is a precise tool used in structural thermal cutting and layout. The tool base is a perfect square containing powerful cast-in magnets. This permits placement in any position. The tool surface is embossed with a protractor inscribed

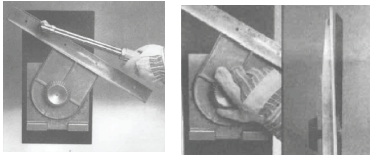
Canada:
SureWex, 49 Schooner St.,
Coquitlam, BC V3K 0B 3
surewerx.com

USA:
SureWex USA Inc.,
Elgin, IL, USA 60123
surewerx.com/usa

Europe:
Balder d.o.o Teslova ulica 30,
SI-1000 Ljubljana, Slovenia
jacksonsafety.eu

with two 90° quadrants graduated in 1° increments. The top of the tool carries an 18" ruler blade divided in 1/8" increments. The ruler can be locked in place at the desired angle setting by hand tightening of the adjustment knob.

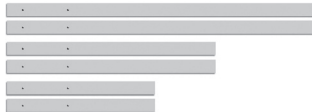
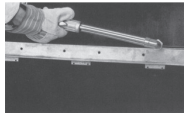
The ruler blade is on a raised plane. This permits its use as a straight edge when flame cutting, without distortion or marring. The blade will also accept attachments or extensions that allow an overall length up to 72". The Burning Square is made of cast aluminum.



Angles can be easily locked in place by hand tightening the adjustment knob. The ruler blade is on a raised plane, which makes it ideal for use as a straight edge when flame cutting, without distortion or marring.

Magnetic Burning Guide

Designed for use with a burning torch or as a straight edge, the Burning Guide is cast of strong, durable material to withstand heat and spatter. The tool's base has three 30 lb pull cast-in magnets for use in any position. A 24" blade on a raised plane is standard.



ATTACHMENTS FOR PRO-MAG BURNING SQUARE & MAGNETIC BURNING GUIDE

72-IN. OVERALL LENGTH

0721-0028.....Stock No. 31

48-IN. OVERALL LENGTH

0721-0027.....Stock No. 30

34-IN. OVERALL LENGTH

0721-0025.....Stock No. 29
(each is in two sections)

DIAL-SET-LEVEL (DSL)

The DSL is an adjustable bubble protractor used with a number of Curv-O-Mark® tools (Stock No. 4, 6, 7, 8, 20 and 33).

The protractor covers 180 degrees through two 90-degrees quadrants, reading in 2-1/2-degree increments.

The bubble is cast in the aluminum dial.



DIAL SET LEVEL

0722-0000

Canada:
SureWerx, 49 Schooner St.,
Coquitlam, BC V3K 0B 3
surewerx.com

USA:
SureWerx USA Inc.,
Elgin, IL, USA 60123
surewerx.com/usa

Europe:
Balder d.o.o Teslova ulica 30,
SI-1000 Ljubljana, Slovenia
jacksonsafety.eu

CONTOUR PRODUCT LINE

sku#	Old Code	Curv-O-Mark code 1	Curv-O-Mark code 2	Description
14771	3001874	0721-0000		#1 Curv-O-Mark Marker
14772	3001875	0721-0001		#2 Curv-O-Mark Combo Adapter
14773	3001877	0721-0003		#4 Jumbo Curv-O-Mark Marker
14774	3001878	0721-0004		#5 Jumbo Marker Combo Adapter
14784	3001888	0721-0014		#14 Circle Ellipse Projector
14775	3001879	0721-0005		#6 Centering Head
14776	3001880	0721-0006		#7 Large Centering Head
14797				Curv-O-Mark Dial Set Level (DSL)
14780	3001884	0721-0010	1208	Radius Marker - Mini (Up to 8" radius)
14781	3001885	0721-0011	1220	Radius Marker - Small (up to 20" radius)
14782	3001886	0721-0012	1224	Radius Marker - Standard (up to 24" radius)
14783	3001887	0721-0013	1340	Radius Marker - Large (Up to 40" radius)
14785	3001890	0721-0016		#19 Multi-Trammel Heads
14778	3001882	0721-0008		#9 Fitter Welder Protractor
14779	3001883	0721-0009		#10 Pipe Flange Aligner
14795	3001903	0721-0029		#32 Flange Aligner Base
14796	3001904	0721-0030		#33 Universal Level
14777	3001881	0721-0007		#8 Pro-Mag Level
14786	3001891	0721-0017		#20 Dial-Angle Flange Level - Nonmagnetic for PVC Pipe
20664	3014807			Curv-O-Mark Worker Kit, includes: #1 Curv-O-Mark Marker, #7 Centering Head, #8 Pro-Mag Level, Standard Radius Marker, Square Soap Stone & Holder, and Lockable Metal Carrying Case
14791	3001899	0721-0000		#28 Magnetic Buring Guide
14792	3001900	0721-0025		#29 34" Extension (Use with #28 Magnetic Burning Guide)
14793	3001901	0721-0027		#30 48" Extension (Use with #28 Magnetic Burning Guide)
14794	3001902	0721-0028		#31 72" Extension (Use with #28 Magnetic Burning Guide)
14752	3001858	0720-0007	164B	Medium Wrap-A-Round, Black
14763	3001867	0720-0029	164GG	Medium Wrap-A-Round, Gray
14753	3001859	0720-0010	176B	Large Wrap-A-Round, Black
14764	3001868	0720-0030	176GG	Large Wrap-A-Round, Gray
14754	3001860	0720-0013	177B	X-Large Wrap-A-Round, Black
14766	3001869	0720-0031	177GG	X-Large Wrap-A-Round, Gray
14756	3001861	0720-0016	179B	XX-Large Wrap-A-Round, Black
14767	3001870	0720-0032	179GG	XX-Large Wrap-A-Round, Gray

Canada:
SureWerx, 49 Schooner St.,
Coquitlam, BC V3K 0B 3

surewerx.com

USA:
SureWerx USA Inc.,
Elgin, IL, USA 60123

surewerx.com/usa

Europe:
Balder d.o.o Teslova ulica 30,
SI-1000 Ljubljana, Slovenia

jacksonsafety.eu